

Criterion II – Teaching–Learning and Evaluation

Student Satisfaction Survey on Teaching Learning Process

Student Satisfaction Survey Analysis for Year 2020-21

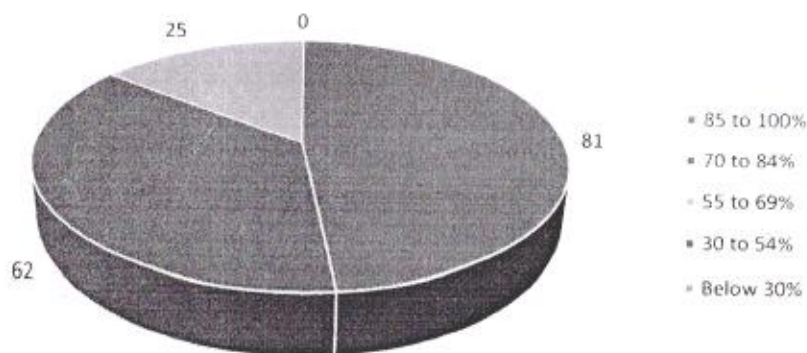
During the Academic year 2020-21 the Total number of students enrolled are 185. We have conducted offline Student Satisfaction Survey. The total students participated in the survey are 168 out of 185.

1. How much of the syllabus was covered in the class?

- 4 – 85 to 100%
- 3 – 70 to 84%
- 2 – 55 to 69%
- 1 – 30 to 54%
- 0 – Below 30%

| Choice Number/ Remark | Students Responses |
|-----------------------|--------------------|
| 4 85 to 100% | 81 |
| 3 70 to 84% | 62 |
| 2 55 to 69% | 25 |
| 1 30 to 54% | 0 |
| 0 Below 30% | 0 |

How much of the syllabus was covered in the class?




 International Institute of Management
I.I.M.S.
 Chinchwad, Pune

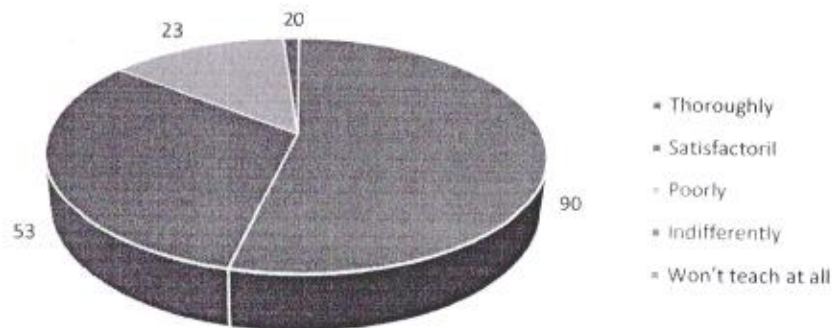


2. How well did the teachers prepare for the classes?

- 4 - Thoroughly
- 3 - Satisfactorily
- 2 - Poorly
- 1 - Indifferently
- 0 - Won't teach at all

| Choice Number/ Remark | Students Responses |
|-----------------------|--------------------|
| 4 Thoroughly | 90 |
| 3 Satisfactorily | 53 |
| 2 Poorly | 23 |
| 1 Indifferently | 2 |
| 0 Won't teach at all | 0 |

How well did the teachers prepare for the classes?

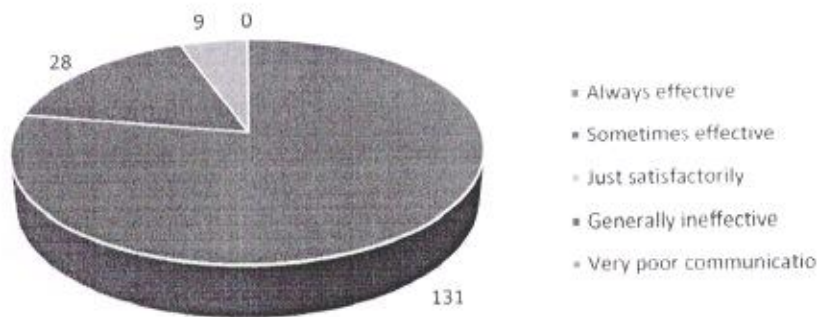


3. How well were the teachers able to communicate?

- 4 – Always effective
- 3 – Sometimes effective
- 2 – Just satisfactorily
- 1– Generally ineffective
- 0– Very poor communication

| Choice Number/ Remark | Students Responses |
|-------------------------|--------------------|
| Always effective | 131 |
| Sometimes effective | 28 |
| Just satisfactorily | 9 |
| Generally ineffective | 0 |
| Very poor communication | 0 |

How well were the teachers able to communicate?



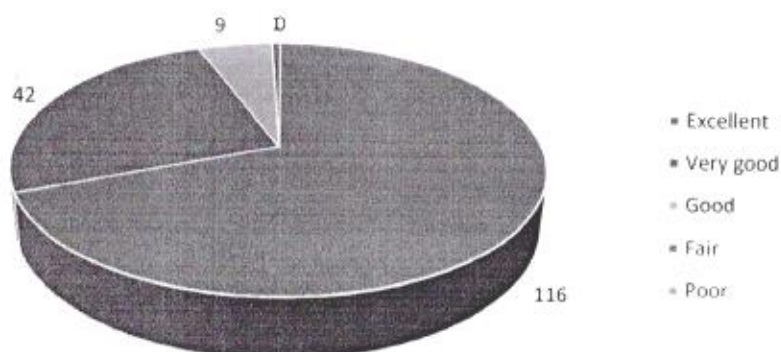


4. The teacher's approach to teaching can best be described as

- 4- Excellent
- 3 - Very good
- 2 - Good
- 1 - Fair
- 0- Poor

| Choice Number/ Remark | Students Responses |
|-----------------------|--------------------|
| 4 Excellent | 116 |
| 3 Very good | 42 |
| 2 Good | 9 |
| 1 Fair | 1 |
| 0 Poor | 0 |

The teacher's approach to teaching can best be described as

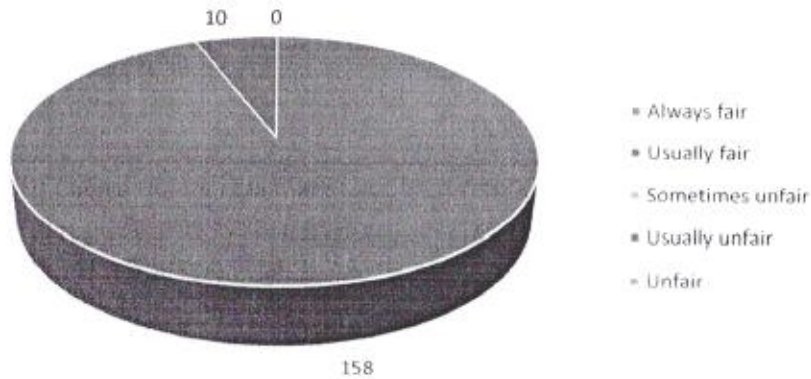


5. Fairness of the internal evaluation process by the teachers.

- 4 – Always fair
- 3 – Usually fair
- 2 – Sometimes unfair
- 1 – Usually unfair
- 0 – Unfair

| Choice Number/ Remark | Students Responses |
|-----------------------|--------------------|
| 4 Always fair | 158 |
| 3 Usually fair | 10 |
| 2 Sometimes unfair | 0 |
| 1 Usually unfair | 0 |
| 0 Unfair | 0 |

Fairness of the internal evaluation process by the teachers.

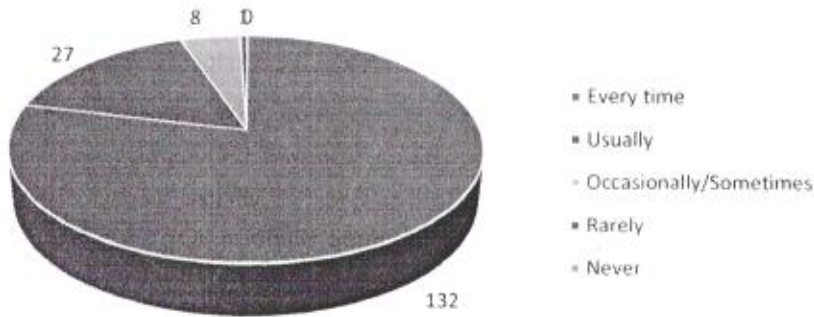


6. Was your performance in assignments discussed with you?

- 4 – Every time
- 3 – Usually
- 2 – Occasionally/Sometimes
- 1 – Rarely
- 0– Never

| Choice Number/ Remark | Students Responses |
|--------------------------|--------------------|
| 4 Every time | 132 |
| 3 Usually | 27 |
| 2 Occasionally/Sometimes | 8 |
| 1 Rarely | 1 |
| 0 Never | 0 |

Was your performance in assignments discussed with you?



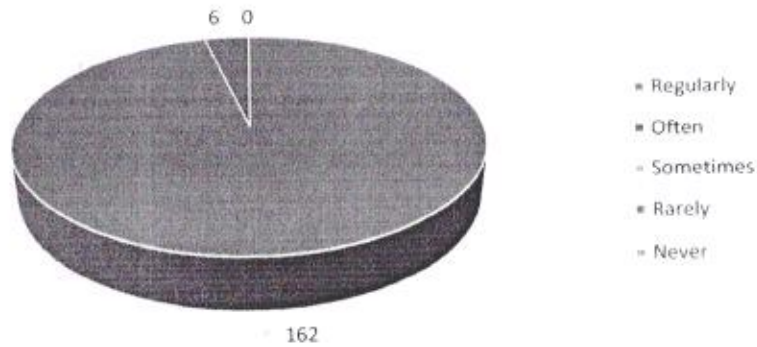


7. The institute takes active interest in promoting internship, student exchange, field visit opportunities for students.

- 4 – Regularly
- 3 – Often
- 2 – Sometimes
- 1 – Rarely
- 0 – Never

| Choice Number/ Remark | Students Responses |
|-----------------------|--------------------|
| 4 Regularly | 162 |
| 3 Often | 6 |
| 2 Sometimes | 0 |
| 1 Rarely | 0 |
| 0 Never | 0 |

The institute takes active interest in promoting internship, student exchange, field visit opportunities for students



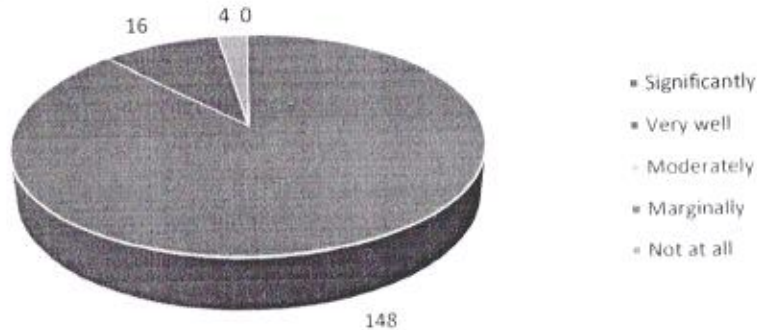


8. The teaching and mentoring process in your institution facilitates you in cognitive, social and emotional growth.

- 4 – Significantly
- 3 – Very well
- 2 – Moderately
- 1 – Marginally
- 0– Not at all

| Choice Number/ Remark | Students Responses |
|-----------------------|--------------------|
| 4 Significantly | 148 |
| 3 Very well | 16 |
| 2 Moderately | 4 |
| 1 Marginally | 0 |
| 0 Not at all | 0 |

The teaching and mentoring process in your institution facilitates you in cognitive, social and emotional growth.



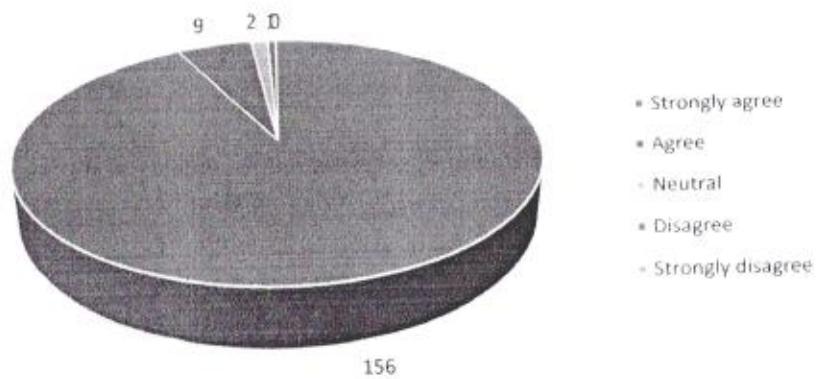


9. The institution provides multiple opportunities to learn and grow.

- 4 – Strongly agree
- 3 – Agree
- 2 – Neutral
- 1 – Disagree
- 0– Strongly disagree

| Choice Number/ Remark | Students Responses |
|-----------------------|--------------------|
| 4 Strongly agree | 156 |
| 3 Agree | 9 |
| 2 Neutral | 2 |
| 1 Disagree | 1 |
| 0 Strongly disagree | 0 |

The institution provides multiple opportunities to learn and grow.



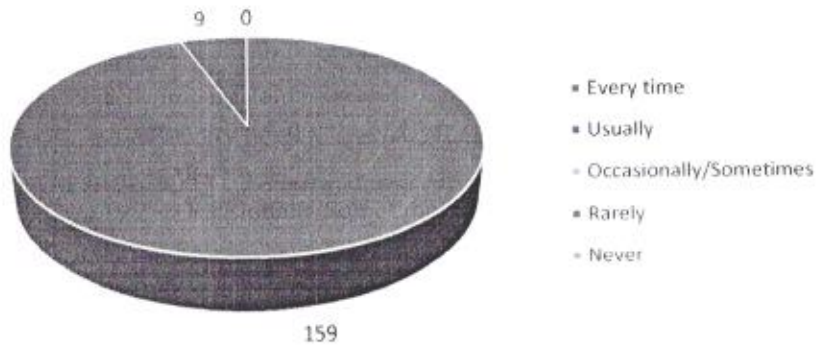


10. Teachers inform you about your expected competencies, course outcomes and programme outcomes.

- 4 – Every time
- 3 – Usually
- 2– Occasionally/Sometimes
- 1 – Rarely
- 0– Never

| Choice Number/ Remark | Students Responses |
|----------------------------|--------------------|
| 4 Every time | 159 |
| 3 Usually | 9 |
| 2 Occasionally/Sometimes | 0 |
| 1 Rarely | 0 |
| 0 Never | 0 |

Teachers inform you about your expected competencies, course outcomes and programme outcomes



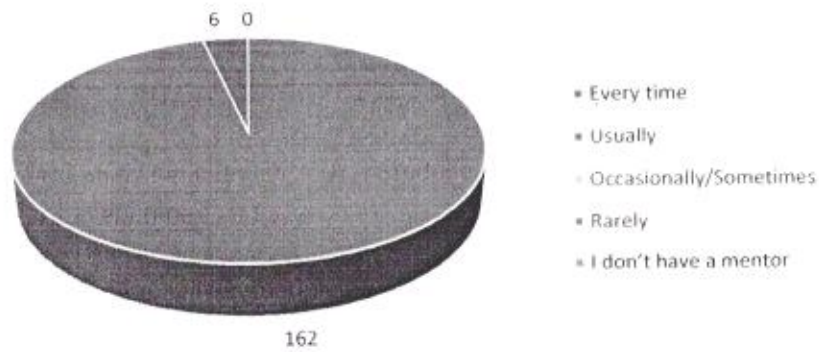


11. Your mentor does a necessary follow-up with an assigned task to you.

- 4 – Every time
- 3 – Usually
- 2 – Occasionally/Sometimes
- 1 – Rarely
- 0 – I don't have a mentor

| Choice Number/ Remark | Students Responses |
|--------------------------|--------------------|
| 4 Every time | 162 |
| 3 Usually | 6 |
| 2 Occasionally/Sometimes | 0 |
| 1 Rarely | 0 |
| 0 I don't have a mentor | 0 |

Your mentor does a necessary follow-up with an assigned task to you



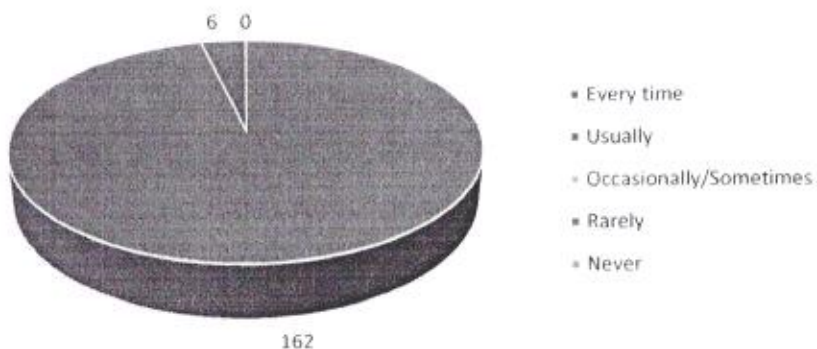


12. The teachers illustrate the concepts through examples and applications.

- 4 – Every time
- 3 – Usually
- 2 – Occasionally/Sometimes
- 1 – Rarely
- 0 – Never

| Choice Number/ Remark | Students Responses |
|--------------------------|--------------------|
| 4 Every time | 162 |
| 3 Usually | 6 |
| 2 Occasionally/Sometimes | 0 |
| 1 Rarely | 0 |
| 0 Never | 0 |

The teachers illustrate the concepts through examples and applications.



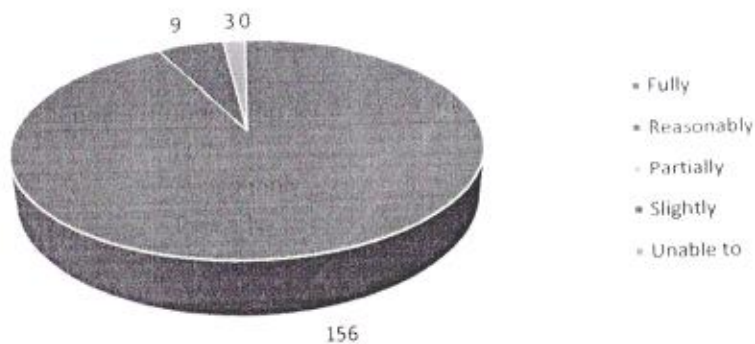


13. The teachers identify your strengths and encourage you with providing right level of challenges.

- 4 – Fully
- 3 – Reasonably
- 2 – Partially
- 1 – Slightly
- 0– Unable to

| Choice Number/ Remark | Students Responses |
|-----------------------|--------------------|
| 4 Fully | 156 |
| 3 Reasonably | 9 |
| 2 Partially | 3 |
| 1 Slightly | 0 |
| 0 Unable to | 0 |

The teachers identify your strengths and encourage you with providing right level of challenges.



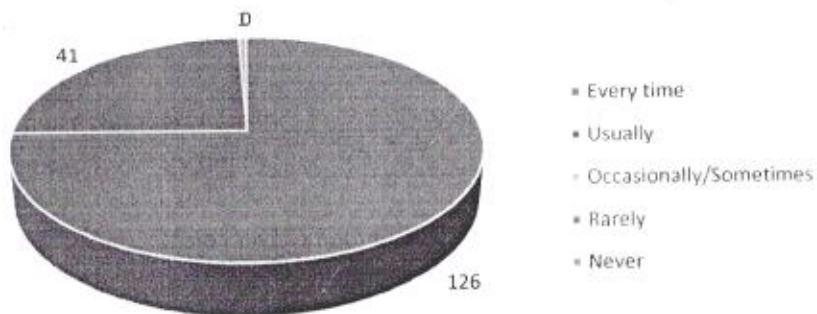


14. Teachers are able to identify your weaknesses and help you to overcome them.

- 4 – Every time
- 3 – Usually
- 2 – Occasionally/Sometimes
- 1 – Rarely
- 0 – Never

| Choice Number/ Remark | Students Responses |
|----------------------------|--------------------|
| 4 Every time | 126 |
| 3 Usually | 41 |
| 2 Occasionally/Sometimes | 1 |
| 1 Rarely | 0 |
| 0 Never | 0 |

Teachers are able to identify your weaknesses and help you to overcome them



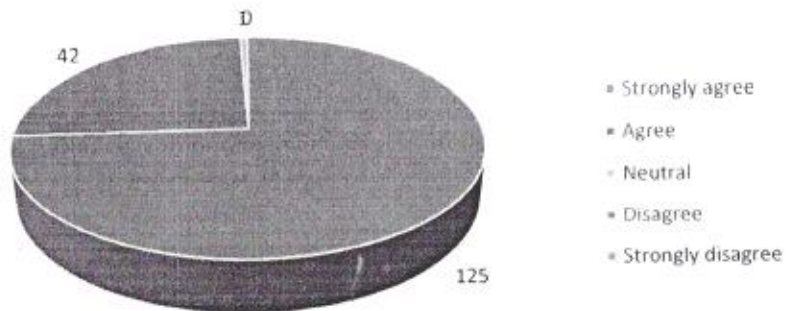


15. The institution makes effort to engage students in the monitoring, review and continuous quality improvement of the teaching learning process.

- 4 – Strongly agree
- 3 – Agree
- 2 – Neutral
- 1 – Disagree
- 0 – Strongly disagree

| Choice Number/ Remark | Students Responses |
|-----------------------|--------------------|
| 4 Strongly agree | 125 |
| 3 Agree | 42 |
| 2 Neutral | 1 |
| 1 Disagree | 0 |
| 0 Strongly disagree | 0 |

The institution makes effort to engage students in the monitoring, review and continuous quality improvement of the teaching learning process.



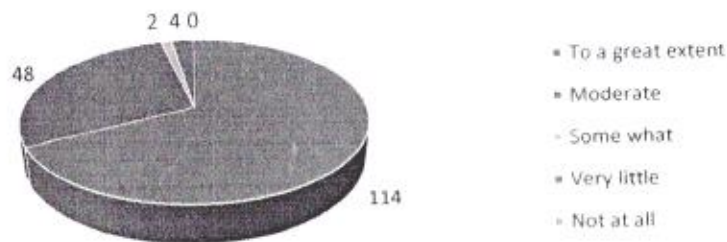


16. The institute/ teachers use student centric methods, such as experiential learning, participative learning and problem solving methodologies for enhancing learning experiences.

- 4 – To a great extent
- 3 – Moderate
- 2 – Some what
- 1 – Very little
- 0 – Not at all

| Choice Number/ Remark | Students Responses |
|-----------------------|--------------------|
| 4 To a great extent | 114 |
| 3 Moderate | 48 |
| 2 Some what | 2 |
| 1 Very little | 4 |
| 0 Not at all | 0 |

The institute/ teachers use student centric methods, such as experiential learning, participative learning and problem solving methodologies for enhancing learning experiences



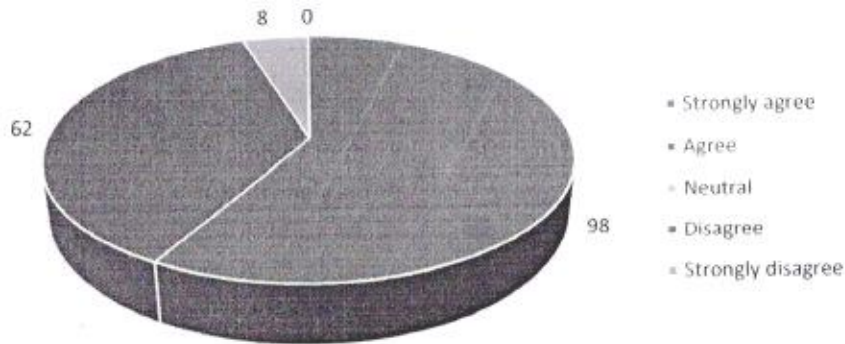


17. Teachers encourage you to participate in extracurricular activities.

- 4 – Strongly agree
- 3 – Agree
- 2 – Neutral
- 1 – Disagree
- 0 – Strongly disagree

| Choice Number/ Remark | Students Responses |
|-----------------------|--------------------|
| 4 Strongly agree | 98 |
| 3 Agree | 62 |
| 2 Neutral | 8 |
| 1 Disagree | 0 |
| 0 Strongly disagree | 0 |

Teachers encourage you to participate in extracurricular activities.



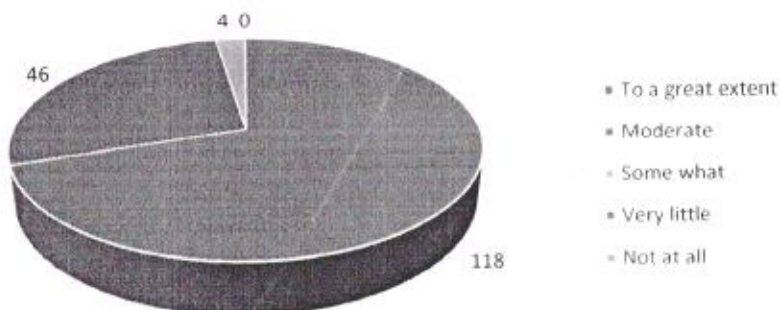


18. Efforts are made by the institute/ teachers to inculcate soft skills, life skills and employability skills to make you ready for the world of work.

- 4 – To a great extent
- 3 – Moderate
- 2 – Some what
- 1 – Very little
- 0 – Not at all

| Choice Number/ Remark | | Students Responses |
|-----------------------|-------------------|--------------------|
| 4 | To a great extent | 118 |
| 3 | Moderate | 46 |
| 2 | Some what | 4 |
| 1 | Very little | 0 |
| 0 | Not at all | 0 |

Efforts are made by the institute/ teachers to inculcate soft skills, life skills and employability skills to make you ready for the world of work.



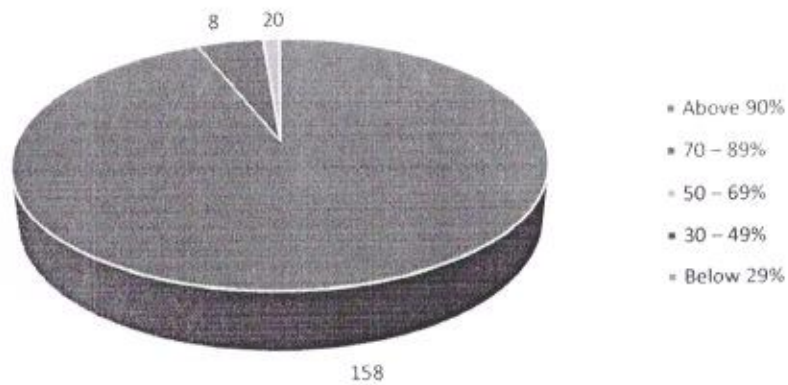


19. What percentage of teachers use ICT tools such as LCD projector, Multimedia, etc. while teaching.

- 4 – Above 90%
- 3 – 70 – 89%
- 2 – 50 – 69%
- 1 – 30 – 49%
- 0 – Below 29%

| Choice Number/ Remark | Students Responses |
|-----------------------|--------------------|
| 4 Above 90% | 158 |
| 3 70 – 89% | 8 |
| 2 50 – 69% | 2 |
| 1 30 – 49% | 0 |
| 0 Below 29% | 0 |

What percentage of teachers use ICT tools such as LCD projector, Multimedia, etc. while teaching.



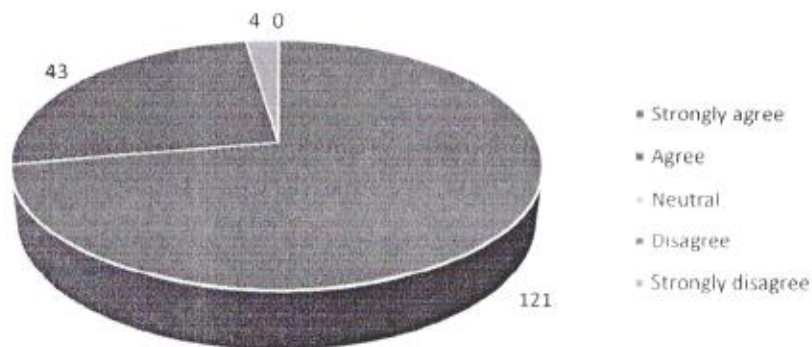


20. The overall quality of teaching-learning process in your institute is very good.

- 4 – Strongly agree
- 3 – Agree
- 2 – Neutral
- 1 – Disagree
- 0 – Strongly disagree

| Choice Number/ Remark | Students Responses |
|-----------------------|--------------------|
| 4 Strongly agree | 121 |
| 3 Agree | 43 |
| 2 Neutral | 4 |
| 1 Disagree | 0 |
| 0 Strongly disagree | 0 |

The overall quality of teaching-learning process in your institute is very good.





Yashaswi Education Society's

Reg No. Maha. : 417/2007/Pune

INTERNATIONAL INSTITUTE OF MANAGEMENT SCIENCE

An ISO 9001 Certified Institute

(Approved by AICTE Ministry of HRD Govt. of India, Recognised by Govt. of Maharashtra and Affiliated to Savitribai Phule Pune University)

Campus : IIMS Bldg, S. No. 168/1/A, Opp Elpro International, Chinchwad, Pune - 411033. Ph. : (020) 27353730/32/33/34, Fax : (020) 27354731
Website : www.iims.ac.in E-mail : info@iims.ac.in

21. Give three observation / suggestions to improve the overall teaching – learning experience in your institution.

- 1 Best Experienced Teachers
- 2 All Teachers are highly qualified
- 3 Teachers are very co-operative, and in touch personally
- 4 Institute provides internship to all the students in top reputed organizations
- 5 Institute has tie up with various companies, we seek more MNC's
- 6 Require more outdoor sports.
- 7 Request to start more PG Programs like MCA
- 8 More Industry Visits are necessary by the Institute.
- 9 Institute can organize more sessions on Research and Consultancy programmes
- 10 Suggest to organize huge no. of Tree plantation programmes
- 11 Request more post COVID Industry Visits.
- 12 Suggest Activity based learning.
- 13 Request to Organize HR Panel Discussion.
- 14 Request to share/organize success story of Startup.
- 15 All teachers are very good and excellent in Teaching.
- 16 I have learned lot of things from Institution, and would like to make my career according to directions given by teachers.


Dr. Shivaji Mundhe
Director
IIMS, Chinchwad, Pune

Dr. Shivaji Mundhe
Director
International Institute of Management Science
Chinchwad, Pune - 411 033

