



## List of infrastructure and other facilities

Sr. No.	Description	Number
1.	Building Photograph	-
2.	Entrance and Reception	-
3.	Director Cabin	-
4.	Library	-
5.	Faculty Room	-
6.	Research Center	-
7.	Training and Placement Office	-
8.	IQAC Cell	-
9.	IIC Cell	-
10.	Entrepreneurship Development Cell	-
11.	Computer Lab	2
12.	Language Lab	1
13.	Server ( Data Server & Domain Server)	2
14.	Classrooms	10
15.	Boys Common Room	1
16.	Girls Common Room	1
17.	Administrative Office	1
18.	Meeting Room	1
19.	Vault Room / Examination Control Room	1
20.	Seminar Hall	1
21.	Cafeteria	1
22.	Water Coolers	7
23.	Air Conditioner	26
24.	Elevator	1
25.	Fire Extinguisher	14
26.	Generator	1



**Dr. Shivaji Mundhe**

Director

## **YASHASWI EDUCATION SOCIETY'S INTERNATIONAL INSTITUTE OF MANAGEMENT SCIENCE**

**DTE CODE  
6775**

AICTE APPROVED | ISO 21001 CERTIFIED | SPPU AFFILIATED | NAAC ACCREDITED  
A: IIMS, OPPOSITE ELPRO, CHINCHWAD, PUNE - 411 033. P: 020 2735 3733  
E: IIMS.INFO@YASHASWIGROUP.IN W: WWW.IIMS.AC.IN

**AISHE CODE  
C - 41595**



Yashaswi Education Society's

Reg No. Maha. : 417/2007/Pune

**INTERNATIONAL INSTITUTE OF MANAGEMENT SCIENCE**

**An ISO 9001 Certified Institute**

(Approved by AICTE Ministry of HRD Govt. of India, Recognised by Govt. of Maharashtra and Affiliated to Savitribai Phule Pune University)

Campus. : IIMS Bldg, S. No. 169/1/A, Opp. Elpro International, Chinchwad, Pune - 411033. Ph.: (020) 27353730/32/33/34, Fax : (020) 27354731  
Website. : [www.iims.ac.in](http://www.iims.ac.in) E-mail : [info@iims.ac.in](mailto:info@iims.ac.in)

## INFRASTRUCTURE FACILITIES

### Front View of Building:





Yashaswi Education Society's

Reg No. Maha. : 417/2007/Pune

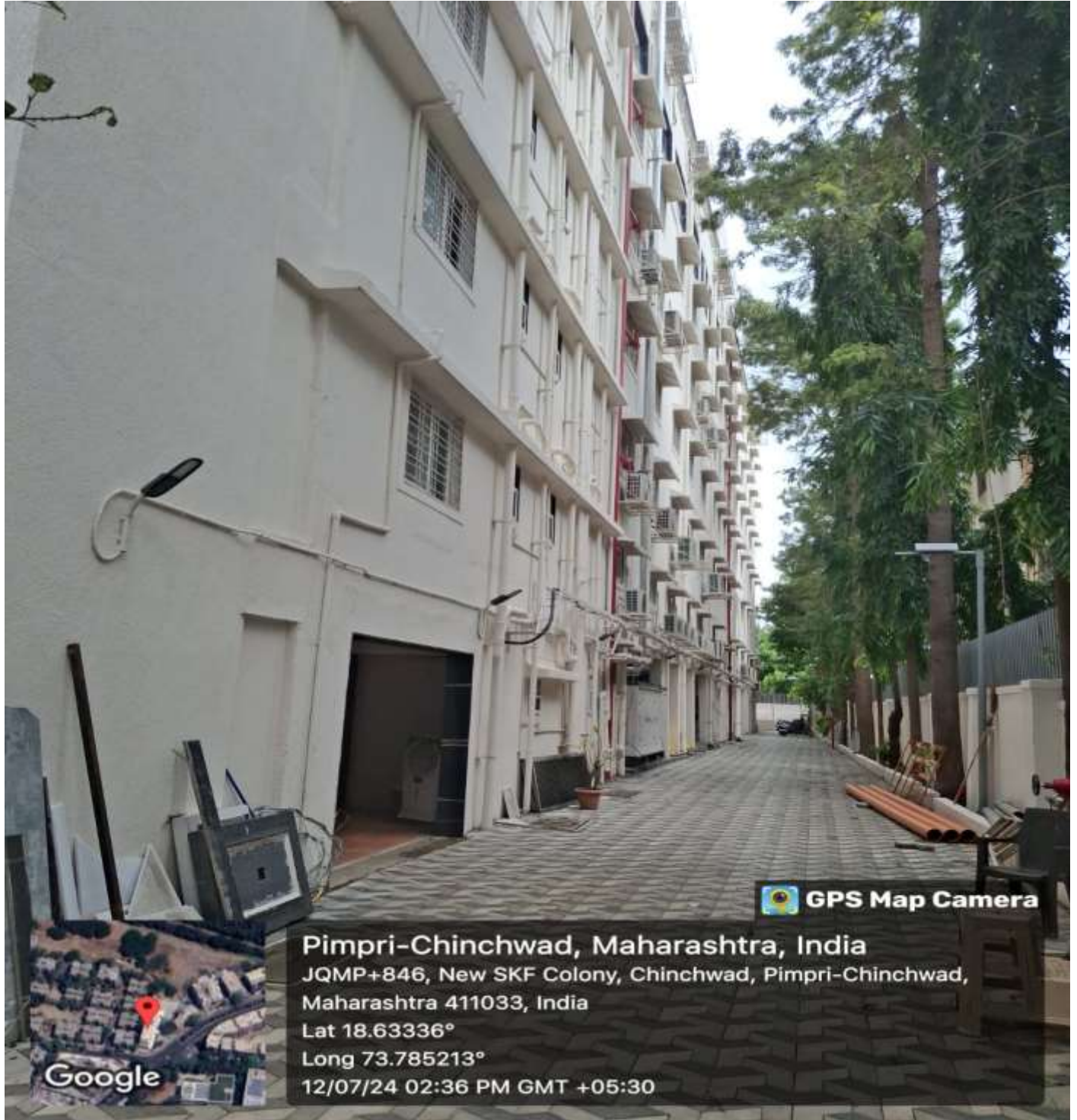
**INTERNATIONAL INSTITUTE OF MANAGEMENT SCIENCE**

**An ISO 9001 Certified Institute**

(Approved by AICTE Ministry of HRD Govt. of India, Recognised by Govt. of Maharashtra and Affiliated to Savitribai Phule Pune University)

Campus. : IIMS Bldg, S. No. 169/1/A, Opp. Elpro International, Chinchwad, Pune - 411033. Ph.: (020) 27353730/32/33/34, Fax : (020) 27354731  
Website. : [www.iims.ac.in](http://www.iims.ac.in) E-mail : [info@iims.ac.in](mailto:info@iims.ac.in)

## Posterior View:





Yashaswi Education Society's

Reg No. Maha. : 417/2007/Pune

**INTERNATIONAL INSTITUTE OF MANAGEMENT SCIENCE**

**An ISO 9001 Certified Institute**

(Approved by AICTE Ministry of HRD Govt. of India, Recognised by Govt. of Maharashtra  
and Affiliated to Savitribai Phule Pune University)

Campus. : IIMS Bldg, S. No. 169/1/A, Opp. Elpro International, Chinchwad, Pune - 411033. Ph.: (020) 27353730/32/33/34, Fax : (020) 27354731  
Website. : [www.iims.ac.in](http://www.iims.ac.in) E-mail : [info@iims.ac.in](mailto:info@iims.ac.in)

## Entrance:





Yashaswi Education Society's

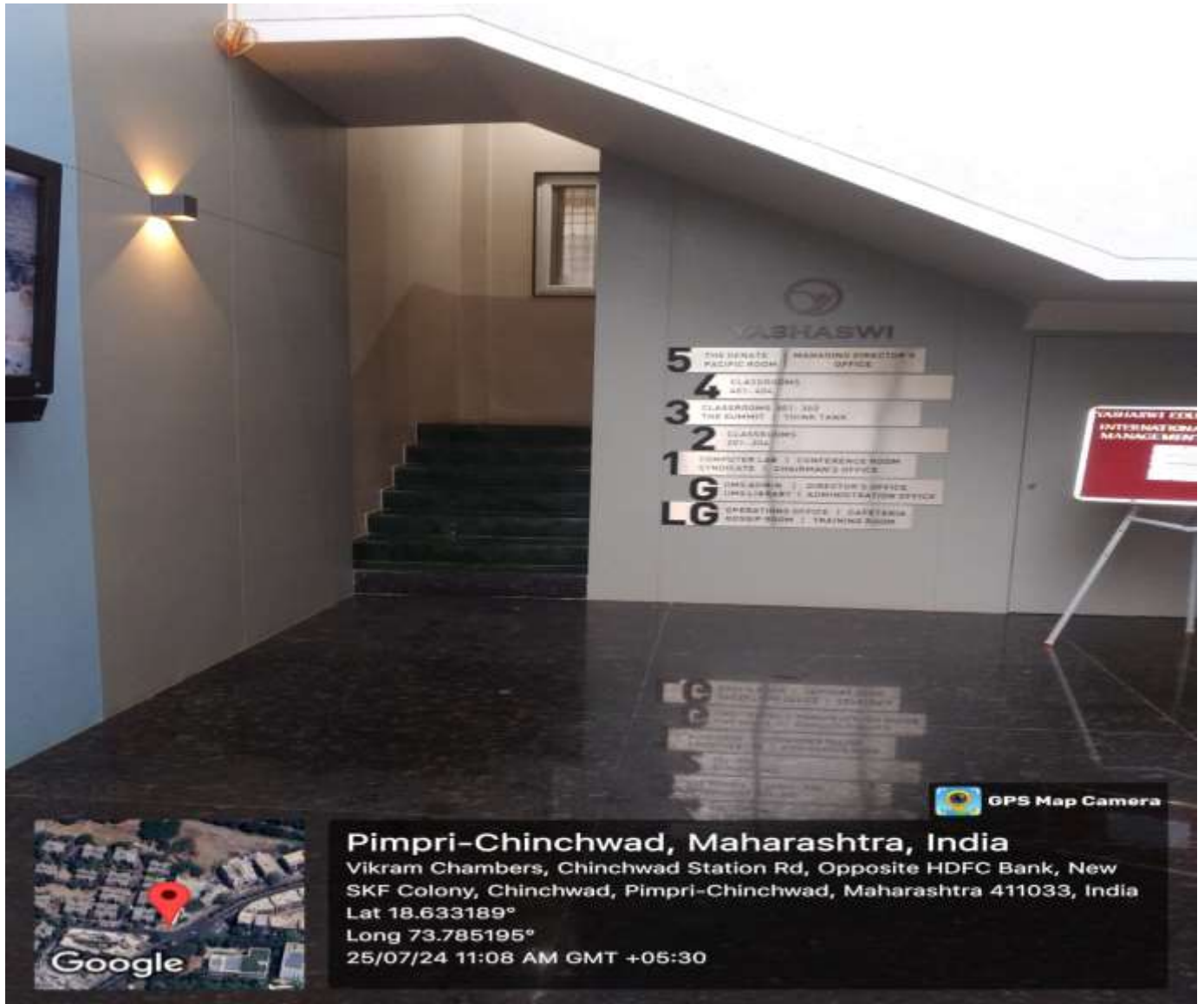
Reg No. Maha. : 417/2007/Pune

# INTERNATIONAL INSTITUTE OF MANAGEMENT SCIENCE

An ISO 9001 Certified Institute

(Approved by AICTE Ministry of HRD Govt. of India, Recognised by Govt. of Maharashtra and Affiliated to Savitribai Phule Pune University)

Campus. : IIMS Bldg, S. No. 169/1/A, Opp. Elpro International, Chinchwad, Pune - 411033. Ph.: (020) 27353730/32/33/34, Fax : (020) 27354731  
Website. : [www.iims.ac.in](http://www.iims.ac.in) E-mail : [info@iims.ac.in](mailto:info@iims.ac.in)





Yashaswi Education Society's

Reg No. Maha. : 417/2007/Pune

**INTERNATIONAL INSTITUTE OF MANAGEMENT SCIENCE**

**An ISO 9001 Certified Institute**

(Approved by AICTE Ministry of HRD Govt. of India, Recognised by Govt. of Maharashtra and Affiliated to Savitribai Phule Pune University)

Campus. : IIMS Bldg, S. No. 169/1/A, Opp. Elpro International, Chinchwad, Pune - 411033. Ph.: (020) 27353730/32/33/34, Fax : (020) 27354731  
Website. : [www.iims.ac.in](http://www.iims.ac.in) E-mail : [info@iims.ac.in](mailto:info@iims.ac.in)

## Director Cabin:



**Pimpri-Chinchwad, Maharashtra, India**

JQMP+827, New SKF Colony, Chinchwad, Pimpri-Chinchwad, Maharashtra

411033, India

Lat 18.633285°

Long 73.785109°

25/07/24 10:59 AM GMT +05:30



Yashaswi Education Society's

Reg No. Maha. : 417/2007/Pune

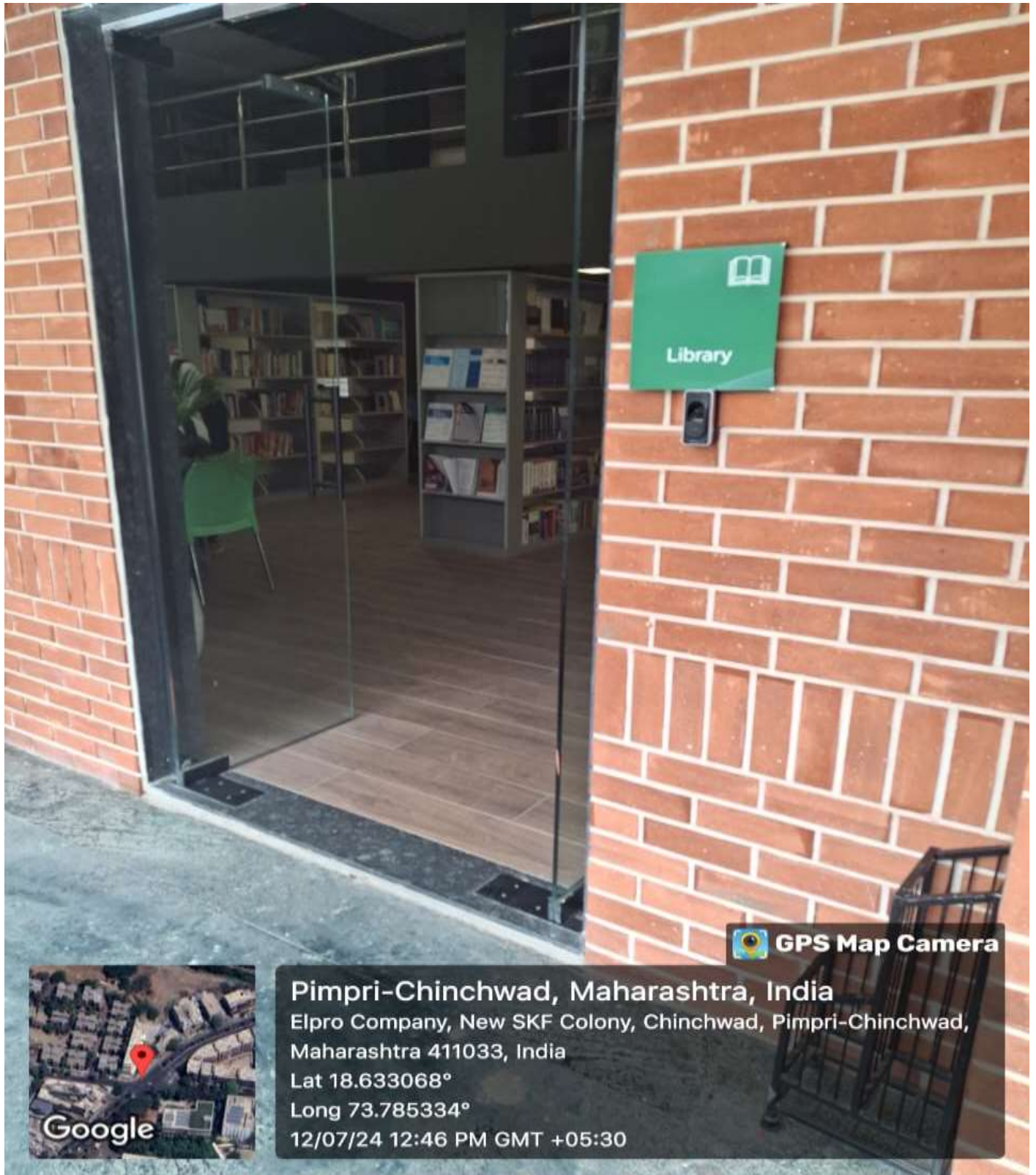
**INTERNATIONAL INSTITUTE OF MANAGEMENT SCIENCE**


**An ISO 9001 Certified Institute**

(Approved by AICTE Ministry of HRD Govt. of India, Recognised by Govt. of Maharashtra and Affiliated to Savitribai Phule Pune University)

Campus. : IIMS Bldg, S. No. 169/1/A, Opp. Elpro International, Chinchwad, Pune - 411033. Ph.: (020) 27353730/32/33/34, Fax : (020) 27354731  
Website. : [www.iims.ac.in](http://www.iims.ac.in) E-mail : [info@iims.ac.in](mailto:info@iims.ac.in)

## Library:



 **GPS Map Camera**



**Pimpri-Chinchwad, Maharashtra, India**

Elpro Company, New SKF Colony, Chinchwad, Pimpri-Chinchwad,  
Maharashtra 411033, India

Lat 18.633068°

Long 73.785334°

12/07/24 12:46 PM GMT +05:30



Yashaswi Education Society's

Reg No. Maha. : 417/2007/Pune

**INTERNATIONAL INSTITUTE OF MANAGEMENT SCIENCE**

**An ISO 9001 Certified Institute**

(Approved by AICTE Ministry of HRD Govt. of India, Recognised by Govt. of Maharashtra and Affiliated to Savitribai Phule Pune University)

Campus. : IIMS Bldg, S. No. 169/1/A, Opp. Elpro International, Chinchwad, Pune - 411033. Ph.: (020) 27353730/32/33/34, Fax : (020) 27354731  
Website. : [www.iims.ac.in](http://www.iims.ac.in) E-mail : [info@iims.ac.in](mailto:info@iims.ac.in)





Yashaswi Education Society's

Reg No. Maha. : 417/2007/Pune

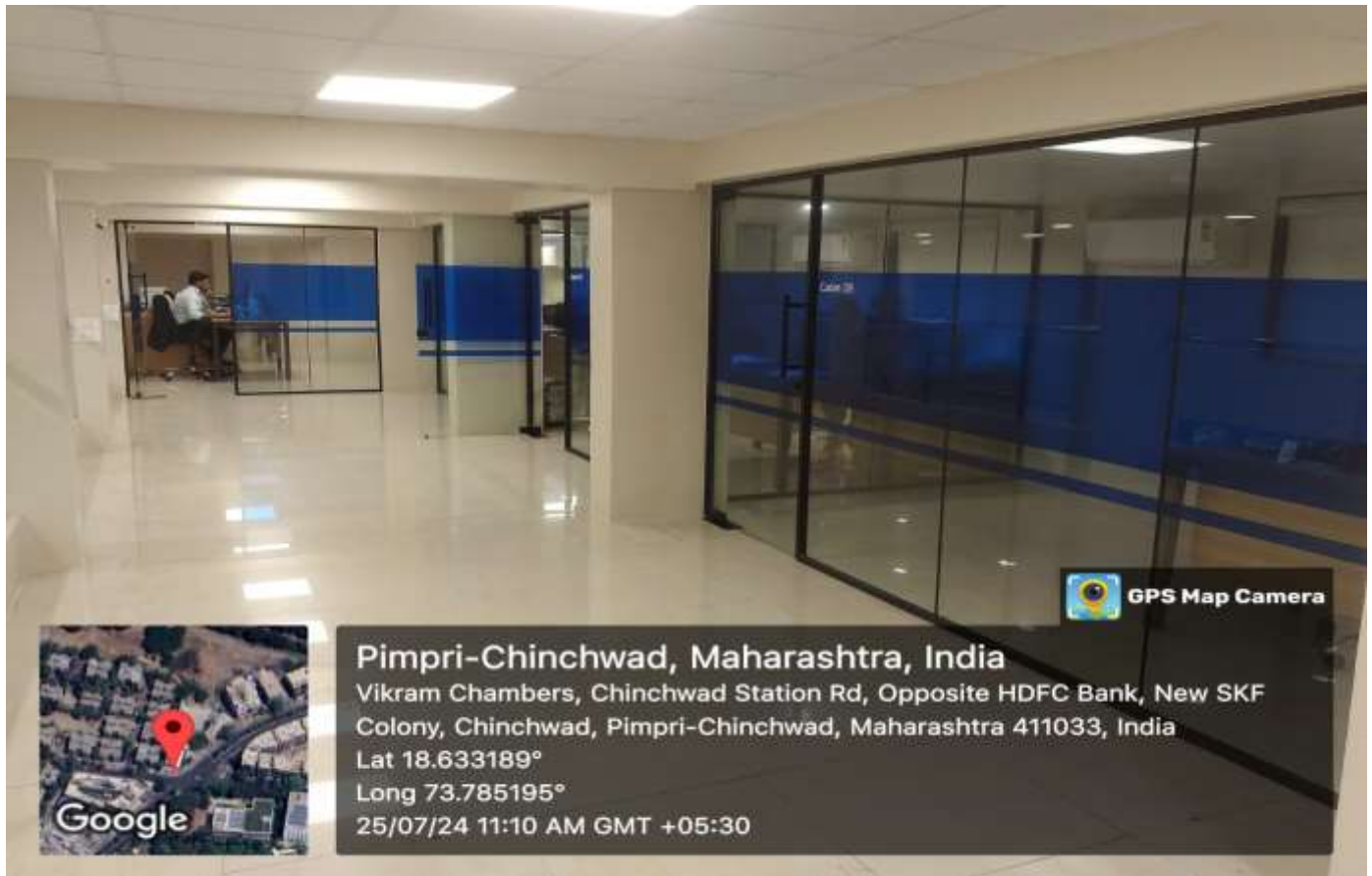
**INTERNATIONAL INSTITUTE OF MANAGEMENT SCIENCE**

**An ISO 9001 Certified Institute**

(Approved by AICTE Ministry of HRD Govt. of India, Recognised by Govt. of Maharashtra and Affiliated to Savitribai Phule Pune University)

Campus. : IIMS Bldg, S. No. 169/1/A, Opp. Elpro International, Chinchwad, Pune - 411033. Ph.: (020) 27353730/32/33/34, Fax : (020) 27354731  
Website. : [www.iims.ac.in](http://www.iims.ac.in) E-mail : [info@iims.ac.in](mailto:info@iims.ac.in)

## Faculty Room:





Yashaswi Education Society's

Reg No. Maha. : 417/2007/Pune

**INTERNATIONAL INSTITUTE OF MANAGEMENT SCIENCE**

**An ISO 9001 Certified Institute**

(Approved by AICTE Ministry of HRD Govt. of India, Recognised by Govt. of Maharashtra  
and Affiliated to Savitribai Phule Pune University)

Campus. : IIMS Bldg, S. No. 169/1/A, Opp. Elpro International, Chinchwad, Pune - 411033. Ph.: (020) 27353730/32/33/34, Fax : (020) 27354731  
Website. : [www.iims.ac.in](http://www.iims.ac.in) E-mail : [info@iims.ac.in](mailto:info@iims.ac.in)





Yashaswi Education Society's

Reg No. Maha. : 417/2007/Pune

**INTERNATIONAL INSTITUTE OF MANAGEMENT SCIENCE**

**An ISO 9001 Certified Institute**

(Approved by AICTE Ministry of HRD Govt. of India, Recognised by Govt. of Maharashtra and Affiliated to Savitribal Phule Pune University)

Campus. : IIMS Bldg, S. No. 169/1/A, Opp. Elpro International, Chinchwad, Pune - 411033. Ph.: (020) 27353730/32/33/34, Fax : (020) 27354731  
Website. : [www.iims.ac.in](http://www.iims.ac.in) E-mail : [info@iims.ac.in](mailto:info@iims.ac.in)

### Research Center:



### Training and Placement Office:



**Corporate Off. :** Yashaswi House, Lane No. 15, Prabhat Road, Pune - 411004 Ph.: (020) 67492727



Yashaswi Education Society's

Reg No. Maha. : 417/2007/Pune

**INTERNATIONAL INSTITUTE OF MANAGEMENT SCIENCE**

**An ISO 9001 Certified Institute**

(Approved by AICTE Ministry of HRD Govt. of India, Recognised by Govt. of Maharashtra and Affiliated to Savitribai Phule Pune University)

Campus. : IIMS Bldg, S. No. 169/1/A, Opp. Elpro International, Chinchwad, Pune - 411033. Ph.: (020) 27353730/32/33/34, Fax : (020) 27354731  
Website. : [www.iims.ac.in](http://www.iims.ac.in) E-mail : [info@iims.ac.in](mailto:info@iims.ac.in)

### IQAC Cell:



### IIC Cell:





Yashaswi Education Society's  
**INTERNATIONAL INSTITUTE OF MANAGEMENT SCIENCE**  
An ISO 9001 Certified Institute  
(Approved by AICTE Ministry of HRD Govt. of India, Recognised by Govt. of Maharashtra  
and Affiliated to Savitribai Phule Pune University)

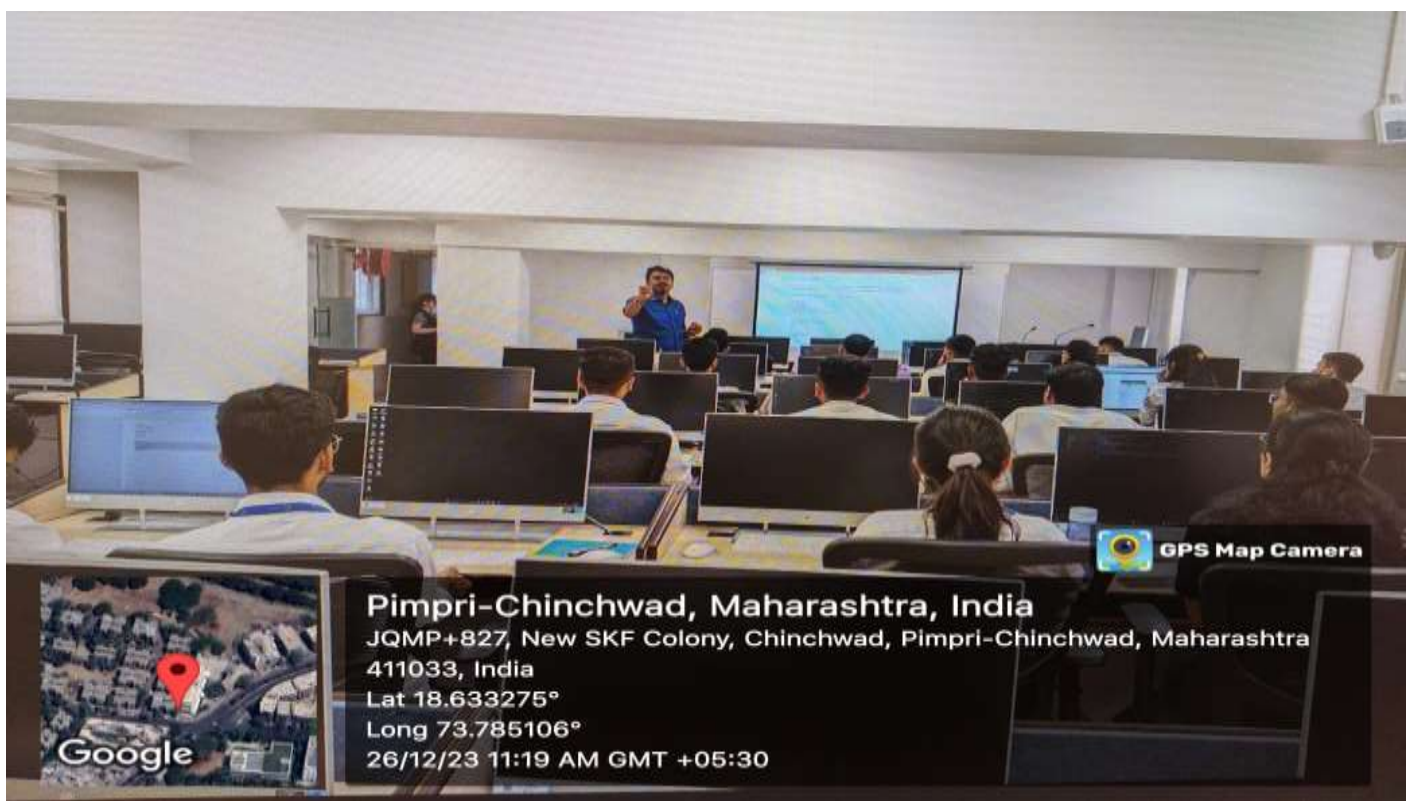
Reg No. Maha. : 417/2007/Pune

Campus. : IIMS Bldg, S. No. 169/1/A, Opp. Elpro International, Chinchwad, Pune - 411033. Ph.: (020) 27353730/32/33/34, Fax : (020) 27354731  
Website. : www.iims.ac.in E-mail : info@iims.ac.in

### Entrepreneurship Development Cell:



### Computer Lab:





Yashaswi Education Society's

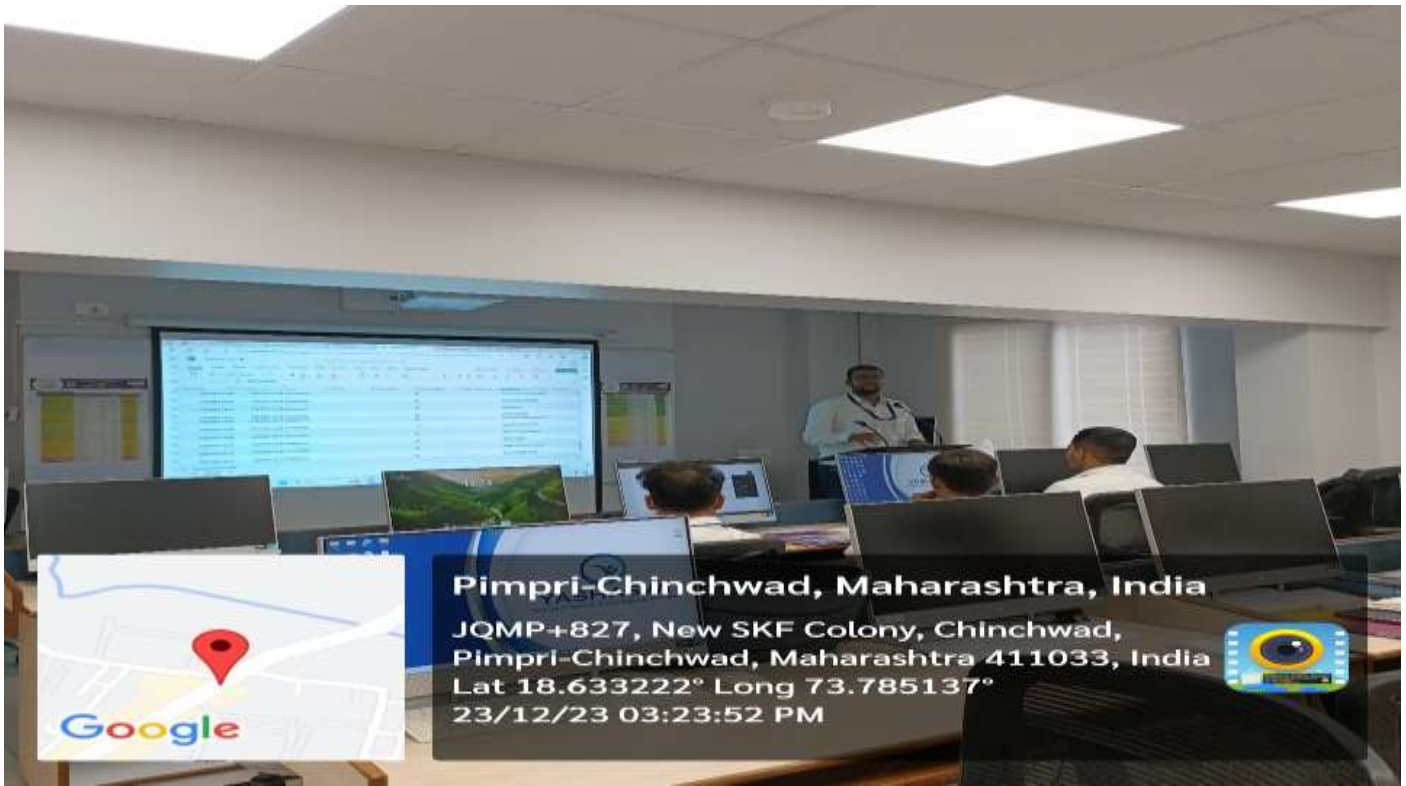
Reg No. Maha. : 417/2007/Pune

**INTERNATIONAL INSTITUTE OF MANAGEMENT SCIENCE**

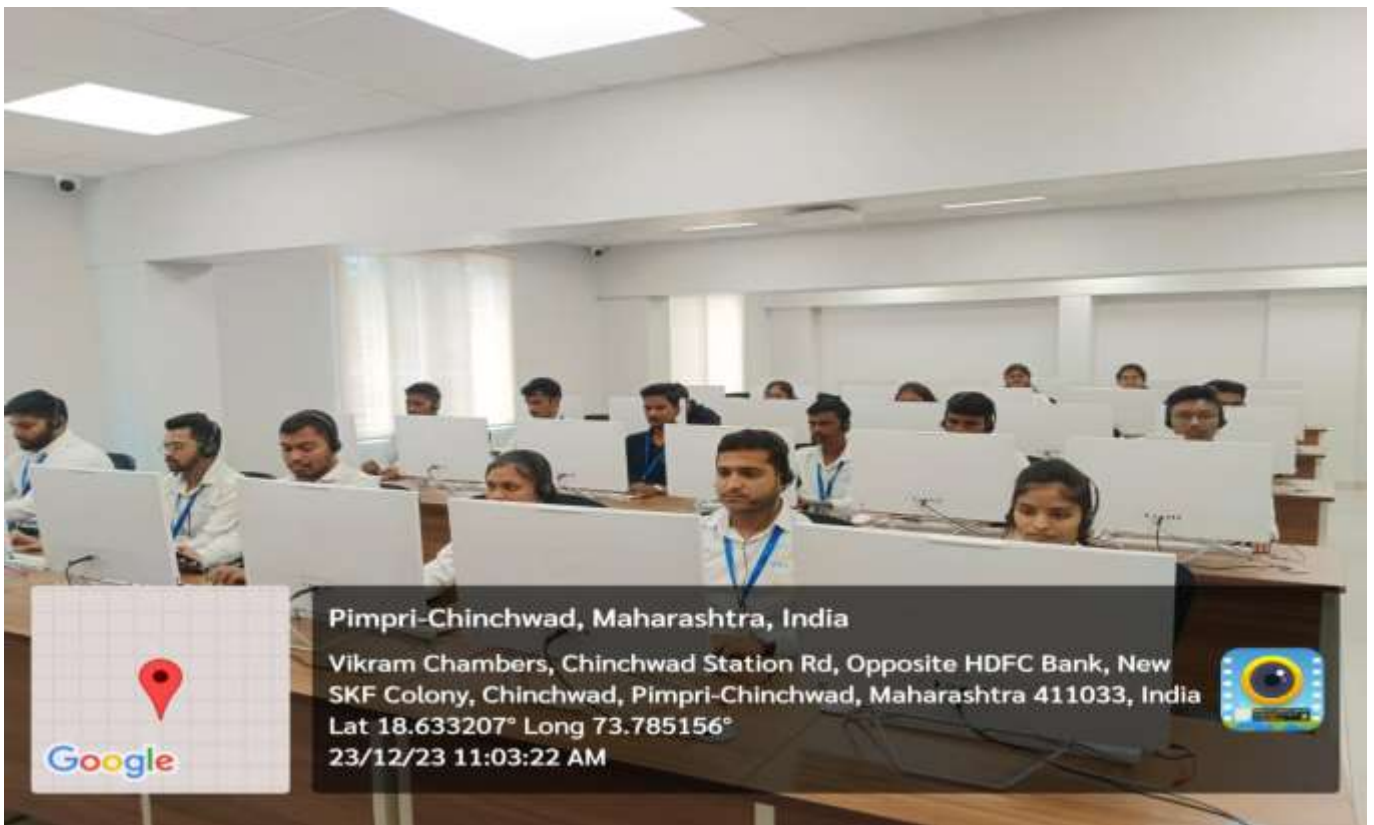
**An ISO 9001 Certified Institute**

(Approved by AICTE Ministry of HRD Govt. of India, Recognised by Govt. of Maharashtra and Affiliated to Savitribai Phule Pune University)

Campus. : IIMS Bldg, S. No. 169/1/A, Opp. Elpro International, Chinchwad, Pune - 411033. Ph.: (020) 27353730/32/33/34, Fax : (020) 27354731  
Website. : [www.iims.ac.in](http://www.iims.ac.in) E-mail : [info@iims.ac.in](mailto:info@iims.ac.in)



### Language Lab:





Yashaswi Education Society's

Reg No. Maha. : 417/2007/Pune

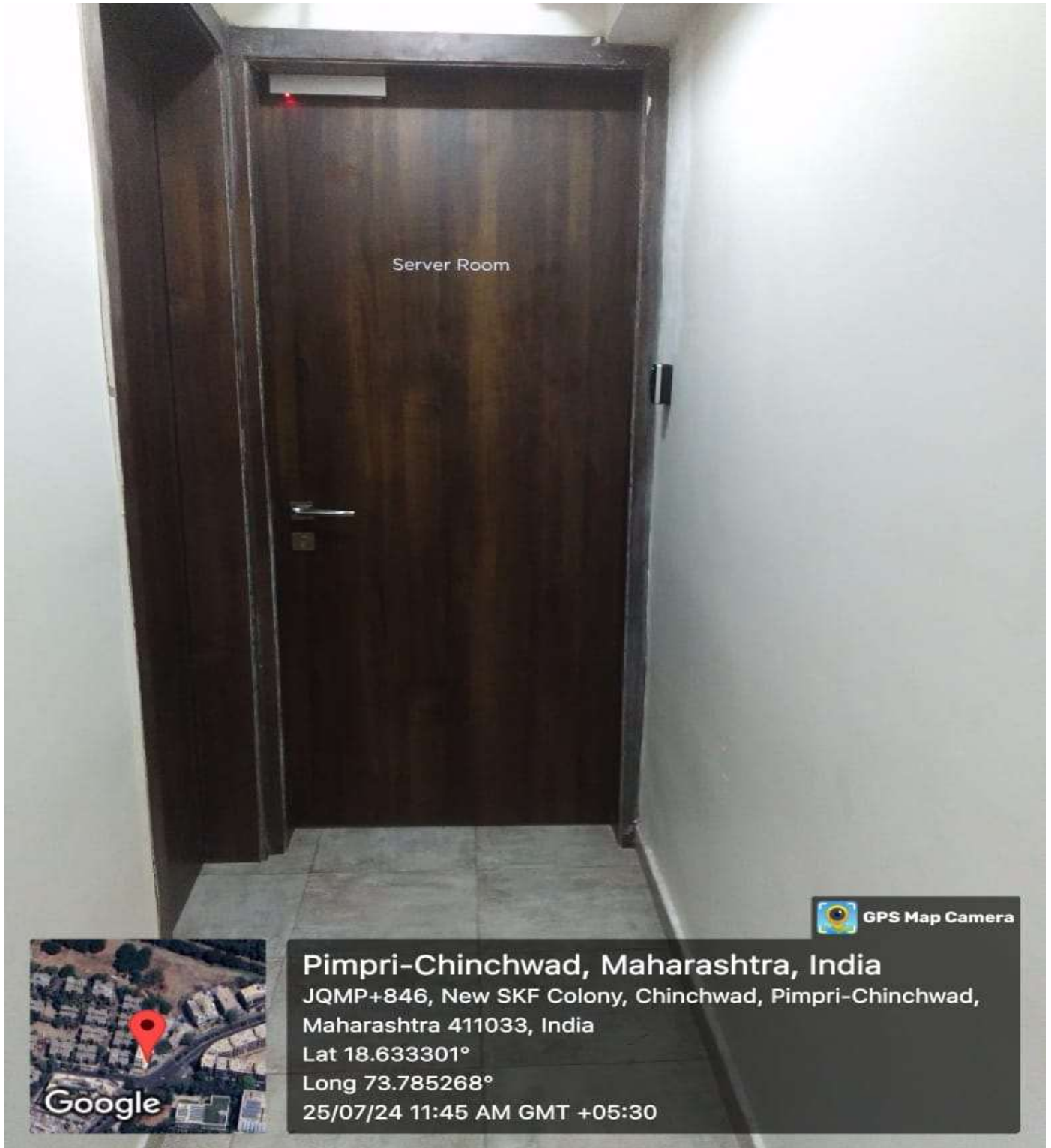
**INTERNATIONAL INSTITUTE OF MANAGEMENT SCIENCE**

**An ISO 9001 Certified Institute**

(Approved by AICTE Ministry of HRD Govt. of India, Recognised by Govt. of Maharashtra and Affiliated to Savitribai Phule Pune University)

Campus. : IIMS Bldg, S. No. 169/1/A, Opp. Elpro International, Chinchwad, Pune - 411033. Ph.: (020) 27353730/32/33/34, Fax : (020) 27354731  
Website. : [www.iims.ac.in](http://www.iims.ac.in) E-mail : [info@iims.ac.in](mailto:info@iims.ac.in)

## Server Room:





Yashaswi Education Society's

Reg No. Maha. : 417/2007/Pune

**INTERNATIONAL INSTITUTE OF MANAGEMENT SCIENCE**

**An ISO 9001 Certified Institute**

(Approved by AICTE Ministry of HRD Govt. of India, Recognised by Govt. of Maharashtra and Affiliated to Savitribai Phule Pune University)

Campus. : IIMS Bldg, S. No. 169/1/A, Opp. Elpro International, Chinchwad, Pune - 411033. Ph.: (020) 27353730/32/33/34, Fax : (020) 27354731  
Website. : [www.iims.ac.in](http://www.iims.ac.in) E-mail : [info@iims.ac.in](mailto:info@iims.ac.in)



**Pimpri-Chinchwad, Maharashtra, India**

JQMP+846, New SKF Colony, Chinchwad, Pimpri-Chinchwad, Maharashtra  
411033, India

Lat 18.633389°

Long 73.785298°

25/07/24 11:58 AM GMT +05:30



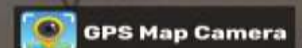
**Pimpri-Chinchwad, Maharashtra, India**

JQMP+846, New SKF Colony, Chinchwad, Pimpri-Chinchwad, Maharashtra  
411033, India

Lat 18.633395°

Long 73.785289°

25/07/24 11:59 AM GMT +05:30





Yashaswi Education Society's

Reg No. Maha. : 417/2007/Pune

**INTERNATIONAL INSTITUTE OF MANAGEMENT SCIENCE**

**An ISO 9001 Certified Institute**

(Approved by AICTE Ministry of HRD Govt. of India, Recognised by Govt. of Maharashtra and Affiliated to Savitribai Phule Pune University)

Campus. : IIMS Bldg, S. No. 169/1/A, Opp. Elpro International, Chinchwad, Pune - 411033. Ph.: (020) 27353730/32/33/34, Fax : (020) 27354731  
Website. : www.iims.ac.in E-mail : info@iims.ac.in

### Classrooms with ICT Facilities:





Yashaswi Education Society's

Reg No. Maha. : 417/2007/Pune

**INTERNATIONAL INSTITUTE OF MANAGEMENT SCIENCE**

**An ISO 9001 Certified Institute**

(Approved by AICTE Ministry of HRD Govt. of India, Recognised by Govt. of Maharashtra and Affiliated to Savitribai Phule Pune University)

Campus. : IIMS Bldg, S. No. 169/1/A, Opp. Elpro International, Chinchwad, Pune - 411033. Ph.: (020) 27353730/32/33/34, Fax : (020) 27354731  
Website. : [www.iims.ac.in](http://www.iims.ac.in) E-mail : [info@iims.ac.in](mailto:info@iims.ac.in)

## Projector:





**Yashaswi Education Society's**

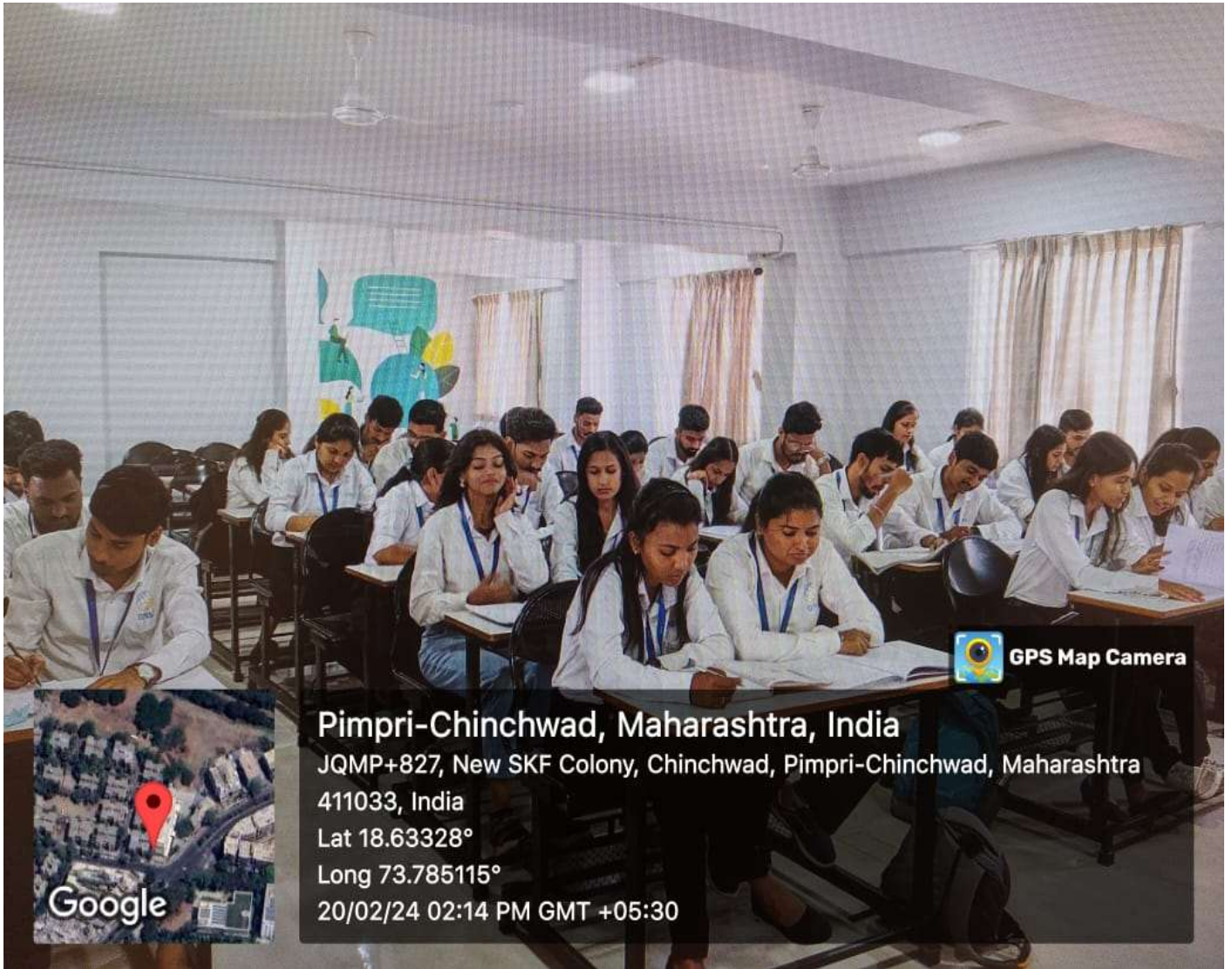
Reg No. Maha. : 417/2007/Pune

**INTERNATIONAL INSTITUTE OF MANAGEMENT SCIENCE**

**An ISO 9001 Certified Institute**

**(Approved by AICTE Ministry of HRD Govt. of India, Recognised by Govt. of Maharashtra and Affiliated to Savitribai Phule Pune University)**

**Campus. : IIMS Bldg, S. No. 169/1/A, Opp. Elpro International, Chinchwad, Pune - 411033. Ph.: (020) 27353730/32/33/34, Fax : (020) 27354731  
Website. : [www.iims.ac.in](http://www.iims.ac.in) E-mail : [info@iims.ac.in](mailto:info@iims.ac.in)**



**Pimpri-Chinchwad, Maharashtra, India**

JQMP+827, New SKF Colony, Chinchwad, Pimpri-Chinchwad, Maharashtra

411033, India

Lat 18.63328°

Long 73.785115°

20/02/24 02:14 PM GMT +05:30





Yashaswi Education Society's

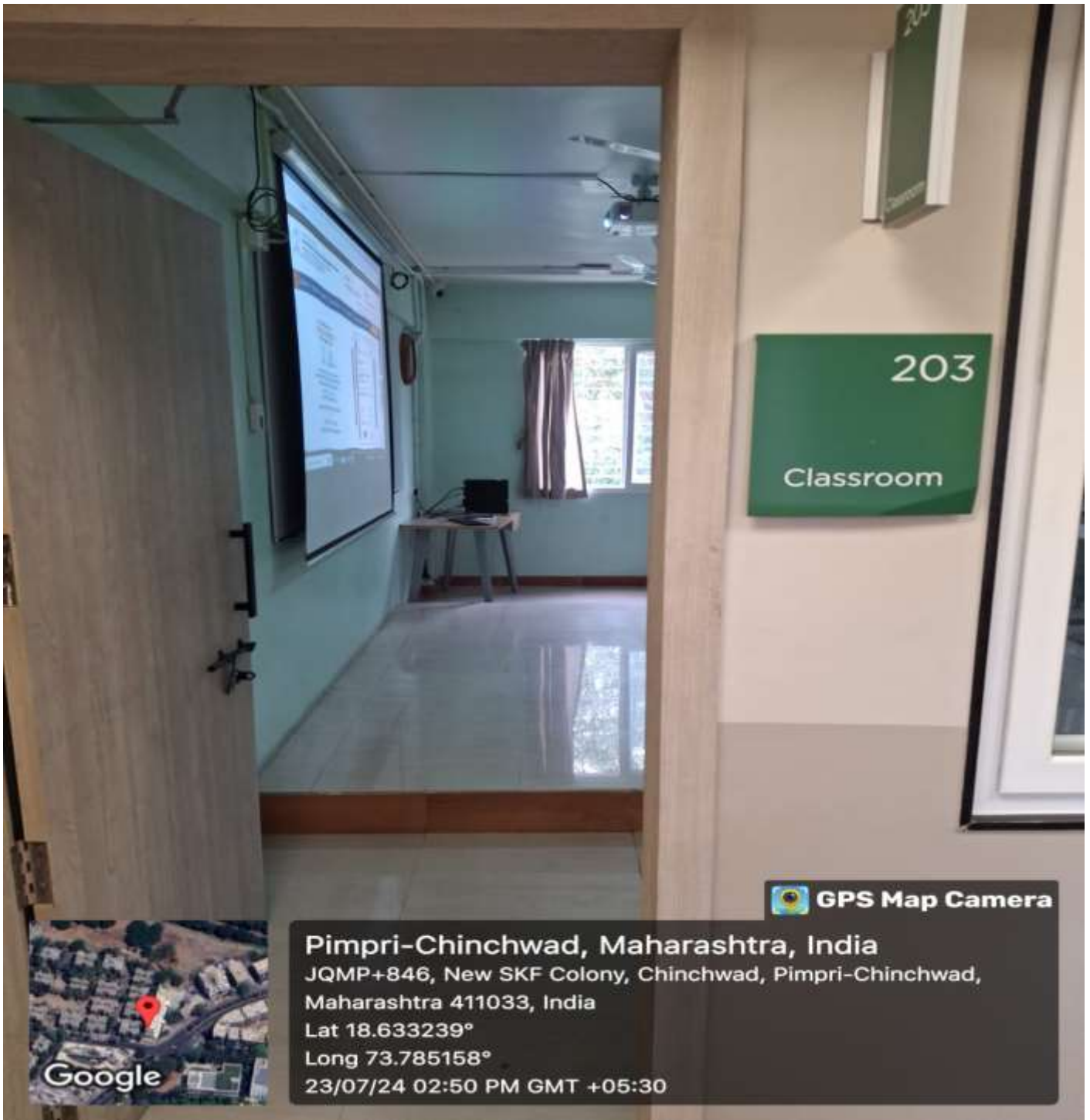
Reg No. Maha. : 417/2007/Pune

**INTERNATIONAL INSTITUTE OF MANAGEMENT SCIENCE**

**An ISO 9001 Certified Institute**

(Approved by AICTE Ministry of HRD Govt. of India, Recognised by Govt. of Maharashtra and Affiliated to Savitribai Phule Pune University)

Campus. : IIMS Bldg, S. No. 169/1/A, Opp. Elpro International, Chinchwad, Pune - 411033. Ph.: (020) 27353730/32/33/34, Fax : (020) 27354731  
Website. : [www.iims.ac.in](http://www.iims.ac.in) E-mail : [info@iims.ac.in](mailto:info@iims.ac.in)





Yashaswi Education Society's

Reg No. Maha. : 417/2007/Pune

**INTERNATIONAL INSTITUTE OF MANAGEMENT SCIENCE**

**An ISO 9001 Certified Institute**

(Approved by AICTE Ministry of HRD Govt. of India, Recognised by Govt. of Maharashtra and Affiliated to Savitribai Phule Pune University)

Campus. : IIMS Bldg, S. No. 169/1/A, Opp. Elpro International, Chinchwad, Pune - 411033. Ph.: (020) 27353730/32/33/34, Fax : (020) 27354731  
Website. : [www.iims.ac.in](http://www.iims.ac.in) E-mail : [info@iims.ac.in](mailto:info@iims.ac.in)

### Boys Common Room:





Yashaswi Education Society's

Reg No. Maha. : 417/2007/Pune

**INTERNATIONAL INSTITUTE OF MANAGEMENT SCIENCE**

**An ISO 9001 Certified Institute**

(Approved by AICTE Ministry of HRD Govt. of India, Recognised by Govt. of Maharashtra and Affiliated to Savitribai Phule Pune University)

Campus. : IIMS Bldg, S. No. 169/1/A, Opp. Elpro International, Chinchwad, Pune - 411033. Ph.: (020) 27353730/32/33/34, Fax : (020) 27354731  
Website. : [www.iims.ac.in](http://www.iims.ac.in) E-mail : [info@iims.ac.in](mailto:info@iims.ac.in)

## Girls Common Room:





Yashaswi Education Society's

Reg No. Maha. : 417/2007/Pune

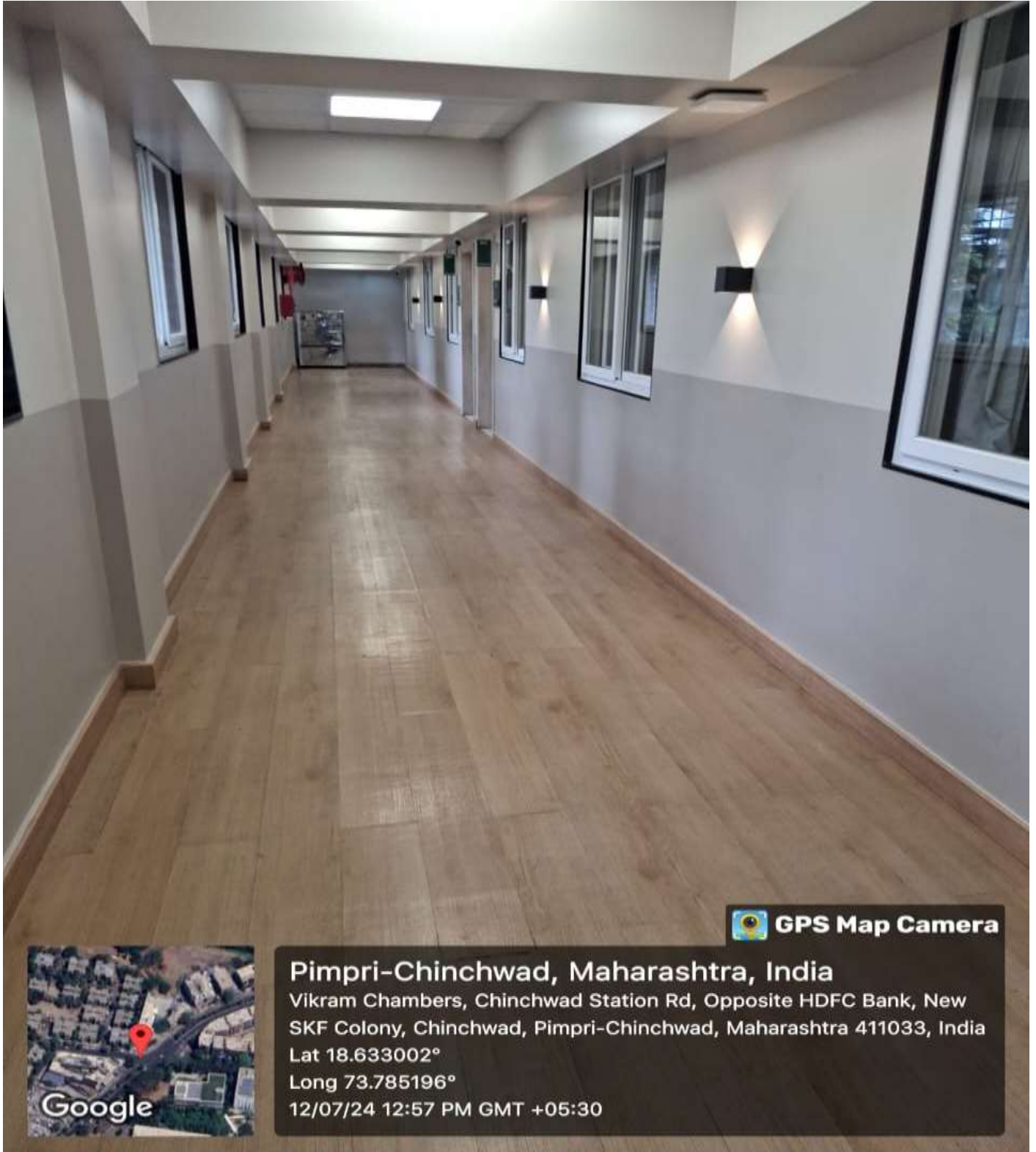
**INTERNATIONAL INSTITUTE OF MANAGEMENT SCIENCE**


**An ISO 9001 Certified Institute**

(Approved by AICTE Ministry of HRD Govt. of India, Recognised by Govt. of Maharashtra and Affiliated to Savitribai Phule Pune University)

Campus. : IIMS Bldg, S. No. 169/1/A, Opp. Elpro International, Chinchwad, Pune - 411033. Ph.: (020) 27353730/32/33/34, Fax : (020) 27354731  
Website. : [www.iims.ac.in](http://www.iims.ac.in) E-mail : [info@iims.ac.in](mailto:info@iims.ac.in)

## Passage:



 **GPS Map Camera**



**Pimpri-Chinchwad, Maharashtra, India**

Vikram Chambers, Chinchwad Station Rd, Opposite HDFC Bank, New SKF Colony, Chinchwad, Pimpri-Chinchwad, Maharashtra 411033, India

Lat 18.633002°

Long 73.785196°

12/07/24 12:57 PM GMT +05:30

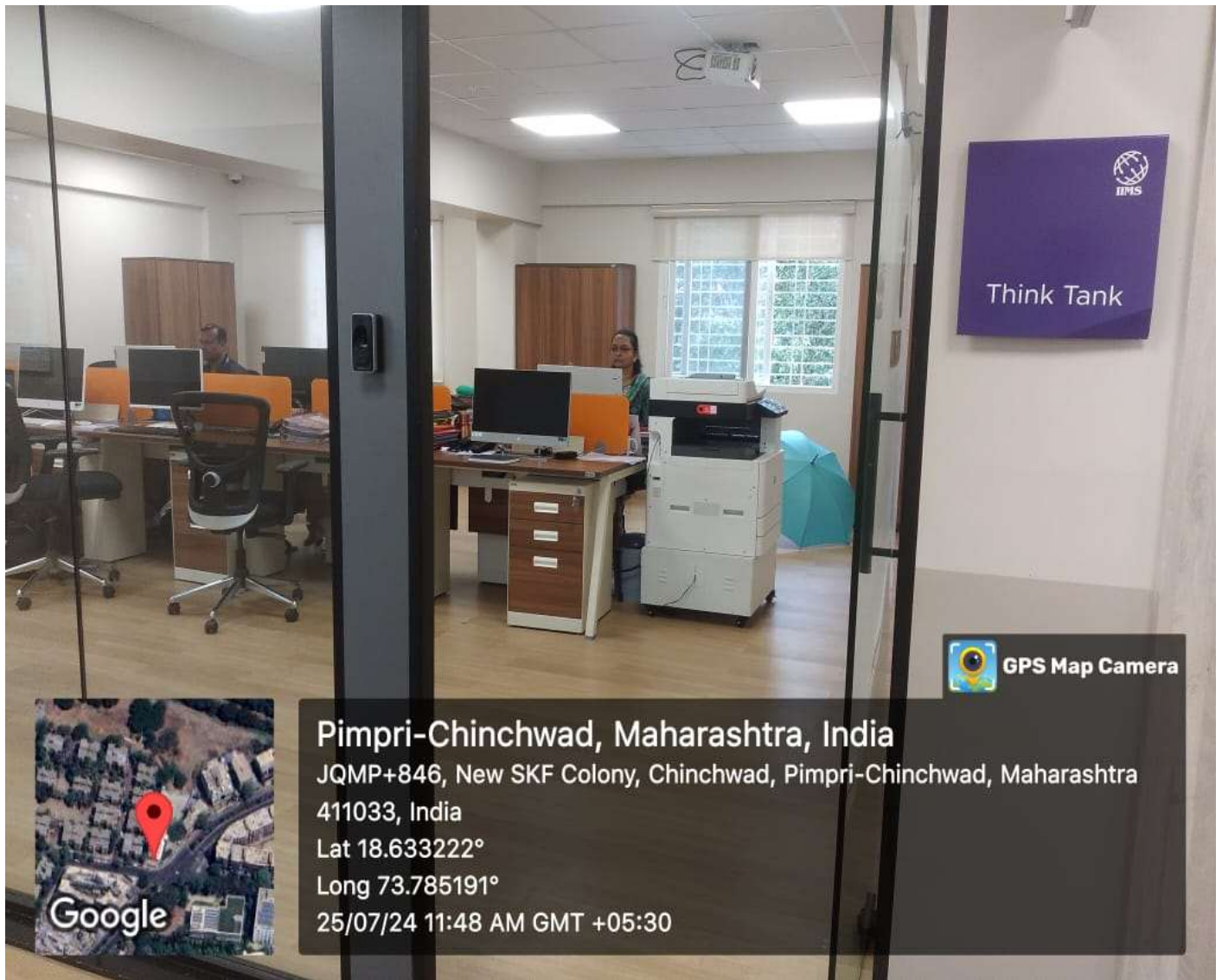


Yashaswi Education Society's  
**INTERNATIONAL INSTITUTE OF MANAGEMENT SCIENCE**  
An ISO 9001 Certified Institute  
(Approved by AICTE Ministry of HRD Govt. of India, Recognised by Govt. of Maharashtra  
and Affiliated to Savitribai Phule Pune University)

Reg No. Maha. : 417/2007/Pune

Campus. : IIMS Bldg, S. No. 169/1/A, Opp. Elpro International, Chinchwad, Pune - 411033. Ph.: (020) 27353730/32/33/34, Fax : (020) 27354731  
Website. : [www.iims.ac.in](http://www.iims.ac.in) E-mail : [info@iims.ac.in](mailto:info@iims.ac.in)

## Administrative Office:





Yashaswi Education Society's

Reg No. Maha. : 417/2007/Pune

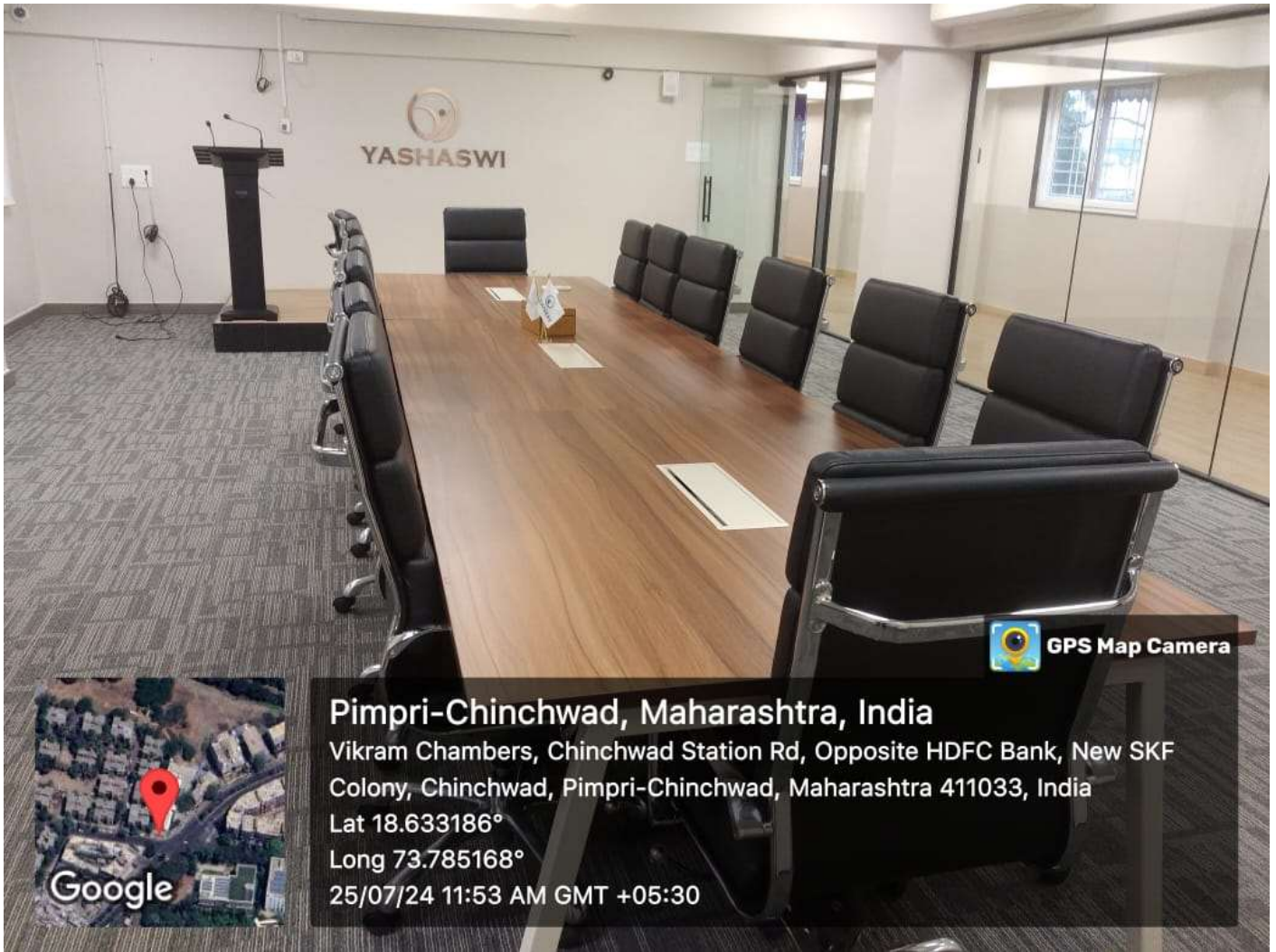
**INTERNATIONAL INSTITUTE OF MANAGEMENT SCIENCE**


**An ISO 9001 Certified Institute**

(Approved by AICTE Ministry of HRD Govt. of India, Recognised by Govt. of Maharashtra and Affiliated to Savitribai Phule Pune University)

Campus. : IIMS Bldg, S. No. 169/1/A, Opp. Elpro International, Chinchwad, Pune - 411033. Ph.: (020) 27353730/32/33/34, Fax : (020) 27354731  
Website. : [www.iims.ac.in](http://www.iims.ac.in) E-mail : [info@iims.ac.in](mailto:info@iims.ac.in)

## Meeting Room



 GPS Map Camera

**Pimpri-Chinchwad, Maharashtra, India**

Vikram Chambers, Chinchwad Station Rd, Opposite HDFC Bank, New SKF Colony, Chinchwad, Pimpri-Chinchwad, Maharashtra 411033, India

Lat 18.633186°

Long 73.785168°

25/07/24 11:53 AM GMT +05:30



Yashaswi Education Society's

Reg No. Maha. : 417/2007/Pune

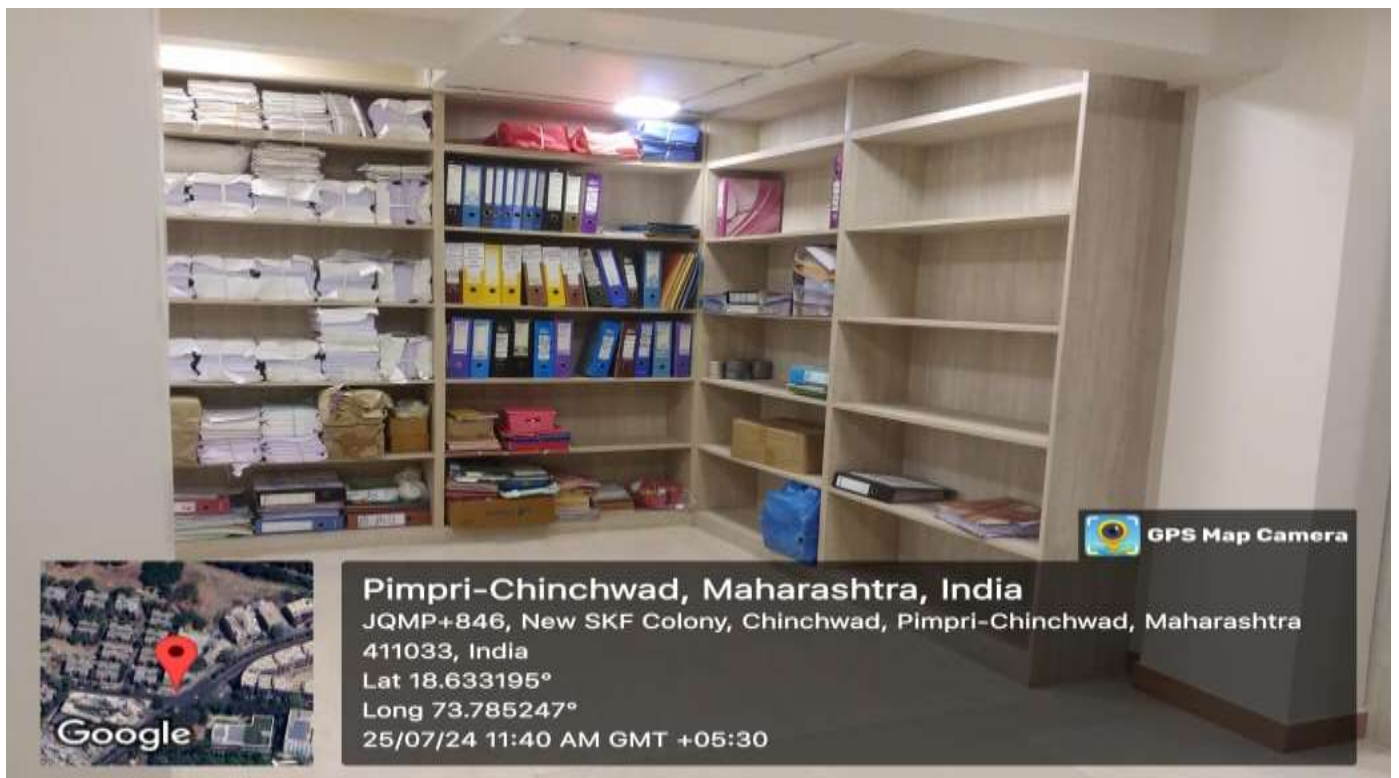
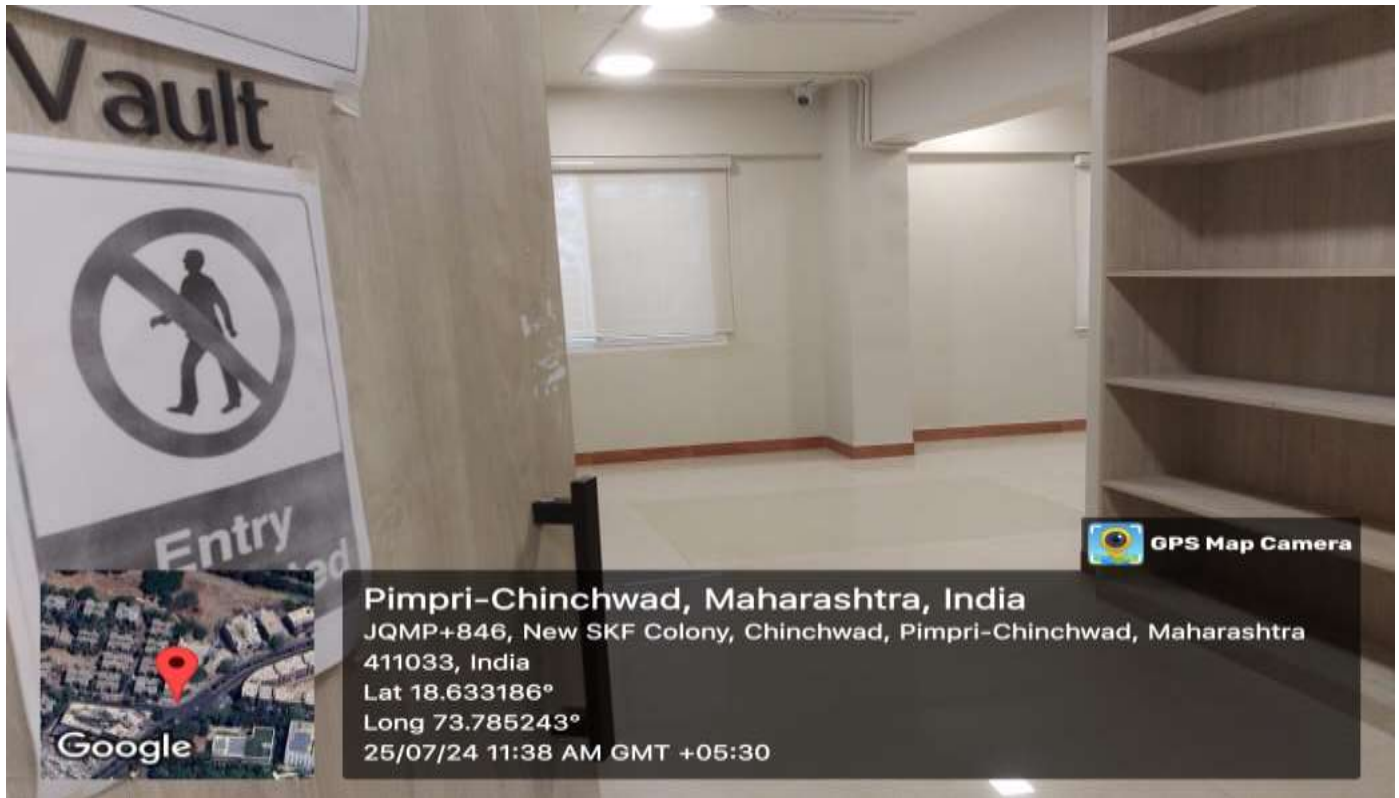
**INTERNATIONAL INSTITUTE OF MANAGEMENT SCIENCE**

**An ISO 9001 Certified Institute**

(Approved by AICTE Ministry of HRD Govt. of India, Recognised by Govt. of Maharashtra and Affiliated to Savitribai Phule Pune University)

Campus. : IIMS Bldg, S. No. 169/1/A, Opp. Elpro International, Chinchwad, Pune - 411033. Ph.: (020) 27353730/32/33/34, Fax : (020) 27354731  
Website. : [www.iims.ac.in](http://www.iims.ac.in) E-mail : [info@iims.ac.in](mailto:info@iims.ac.in)

## Vault Room:





Yashaswi Education Society's

Reg No. Maha. : 417/2007/Pune

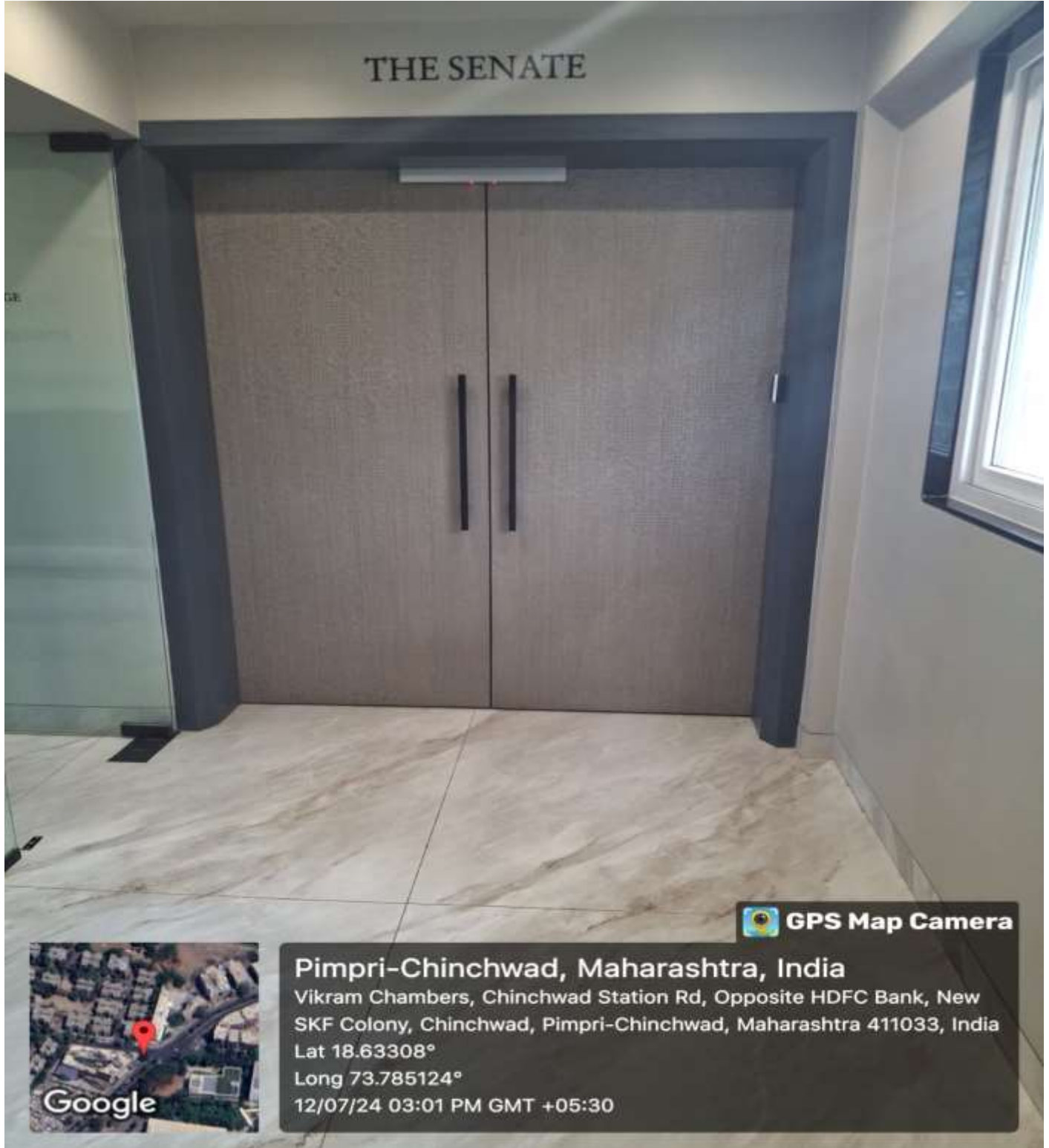
**INTERNATIONAL INSTITUTE OF MANAGEMENT SCIENCE**

**An ISO 9001 Certified Institute**

(Approved by AICTE Ministry of HRD Govt. of India, Recognised by Govt. of Maharashtra and Affiliated to Savitribai Phule Pune University)

Campus. : IIMS Bldg, S. No. 169/1/A, Opp. Elpro International, Chinchwad, Pune - 411033. Ph.: (020) 27353730/32/33/34, Fax : (020) 27354731  
Website. : [www.iims.ac.in](http://www.iims.ac.in) E-mail : [info@iims.ac.in](mailto:info@iims.ac.in)

## Seminar Hall:





Yashaswi Education Society's

Reg No. Maha. : 417/2007/Pune

**INTERNATIONAL INSTITUTE OF MANAGEMENT SCIENCE**

**An ISO 9001 Certified Institute**

(Approved by AICTE Ministry of HRD Govt. of India, Recognised by Govt. of Maharashtra and Affiliated to Savitribai Phule Pune University)

Campus. : IIMS Bldg, S. No. 169/1/A, Opp. Elpro International, Chinchwad, Pune - 411033. Ph.: (020) 27353730/32/33/34, Fax : (020) 27354731  
Website. : [www.iims.ac.in](http://www.iims.ac.in) E-mail : [info@iims.ac.in](mailto:info@iims.ac.in)



Pimpri-Chinchwad, Maharashtra, India

JQMP+827, New SKF Colony, Chinchwad, Pimpri-Chinchwad, Maharashtra  
411033, India

Lat 18.633271°

Long 73.785115°

24/07/24 10:12 AM GMT +05:30



Yashaswi Education Society's

Reg No. Maha. : 417/2007/Pune

**INTERNATIONAL INSTITUTE OF MANAGEMENT SCIENCE**

**An ISO 9001 Certified Institute**

(Approved by AICTE Ministry of HRD Govt. of India, Recognised by Govt. of Maharashtra and Affiliated to Savitribai Phule Pune University)

Campus. : IIMS Bldg, S. No. 169/1/A, Opp. Elpro International, Chinchwad, Pune - 411033. Ph.: (020) 27353730/32/33/34, Fax : (020) 27354731  
Website. : [www.iims.ac.in](http://www.iims.ac.in) E-mail : [info@iims.ac.in](mailto:info@iims.ac.in)

## Washroom for Ladies:



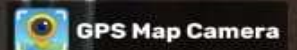
**Pimpri-Chinchwad, Maharashtra, India**

JQMP+846, New SKF Colony, Chinchwad, Pimpri-Chinchwad,  
Maharashtra 411033, India

Lat 18.633361°

Long 73.785298°

25/07/24 12:27 PM GMT +05:30





Yashaswi Education Society's

Reg No. Maha. : 417/2007/Pune

**INTERNATIONAL INSTITUTE OF MANAGEMENT SCIENCE**

**An ISO 9001 Certified Institute**

(Approved by AICTE Ministry of HRD Govt. of India, Recognised by Govt. of Maharashtra and Affiliated to Savitribai Phule Pune University)

Campus. : IIMS Bldg, S. No. 169/1/A, Opp. Elpro International, Chinchwad, Pune - 411033. Ph.: (020) 27353730/32/33/34, Fax : (020) 27354731  
Website. : [www.iims.ac.in](http://www.iims.ac.in) E-mail : [info@iims.ac.in](mailto:info@iims.ac.in)

## Washroom for Gents:





Yashaswi Education Society's

Reg No. Maha. : 417/2007/Pune

**INTERNATIONAL INSTITUTE OF MANAGEMENT SCIENCE**

**An ISO 9001 Certified Institute**

(Approved by AICTE Ministry of HRD Govt. of India, Recognised by Govt. of Maharashtra and Affiliated to Savitribai Phule Pune University)

Campus. : IIMS Bldg, S. No. 169/1/A, Opp. Elpro International, Chinchwad, Pune - 411033. Ph.: (020) 27353730/32/33/34, Fax : (020) 27354731  
Website. : [www.iims.ac.in](http://www.iims.ac.in) E-mail : [info@iims.ac.in](mailto:info@iims.ac.in)

## Cafeteria:





Yashaswi Education Society's

Reg No. Maha. : 417/2007/Pune

**INTERNATIONAL INSTITUTE OF MANAGEMENT SCIENCE**

**An ISO 9001 Certified Institute**

(Approved by AICTE Ministry of HRD Govt. of India, Recognised by Govt. of Maharashtra and Affiliated to Savitribai Phule Pune University)

Campus. : IIMS Bldg, S. No. 169/1/A, Opp. Elpro International, Chinchwad, Pune - 411033. Ph.: (020) 27353730/32/33/34, Fax : (020) 27354731  
Website. : [www.iims.ac.in](http://www.iims.ac.in) E-mail : [info@iims.ac.in](mailto:info@iims.ac.in)

### Facility for Drinking Water:



**Pimpri-Chinchwad, Maharashtra, India**

JQMP+846, New SKF Colony, Chinchwad, Pimpri-Chinchwad,  
Maharashtra 411033, India

Lat 18.633285°

Long 73.785161°

12/06/24 05:05 PM GMT +05:30



Yashaswi Education Society's

Reg No. Maha. : 417/2007/Pune

**INTERNATIONAL INSTITUTE OF MANAGEMENT SCIENCE**

**An ISO 9001 Certified Institute**

(Approved by AICTE Ministry of HRD Govt. of India, Recognised by Govt. of Maharashtra  
and Affiliated to Savitribai Phule Pune University)

Campus. : IIMS Bldg, S. No. 169/1/A, Opp. Elpro International, Chinchwad, Pune - 411033. Ph.: (020) 27353730/32/33/34, Fax : (020) 27354731  
Website. : [www.iims.ac.in](http://www.iims.ac.in) E-mail : [info@iims.ac.in](mailto:info@iims.ac.in)

## Air Conditioners:





Yashaswi Education Society's

Reg No. Maha. : 417/2007/Pune

**INTERNATIONAL INSTITUTE OF MANAGEMENT SCIENCE**

**An ISO 9001 Certified Institute**

(Approved by AICTE Ministry of HRD Govt. of India, Recognised by Govt. of Maharashtra and Affiliated to Savitribai Phule Pune University)

Campus. : IIMS Bldg, S. No. 169/1/A, Opp. Elpro International, Chinchwad, Pune - 411033. Ph.: (020) 27353730/32/33/34, Fax : (020) 27354731  
Website. : [www.iims.ac.in](http://www.iims.ac.in) E-mail : [info@iims.ac.in](mailto:info@iims.ac.in)

## Elevator:





Yashaswi Education Society's

Reg No. Maha. : 417/2007/Pune

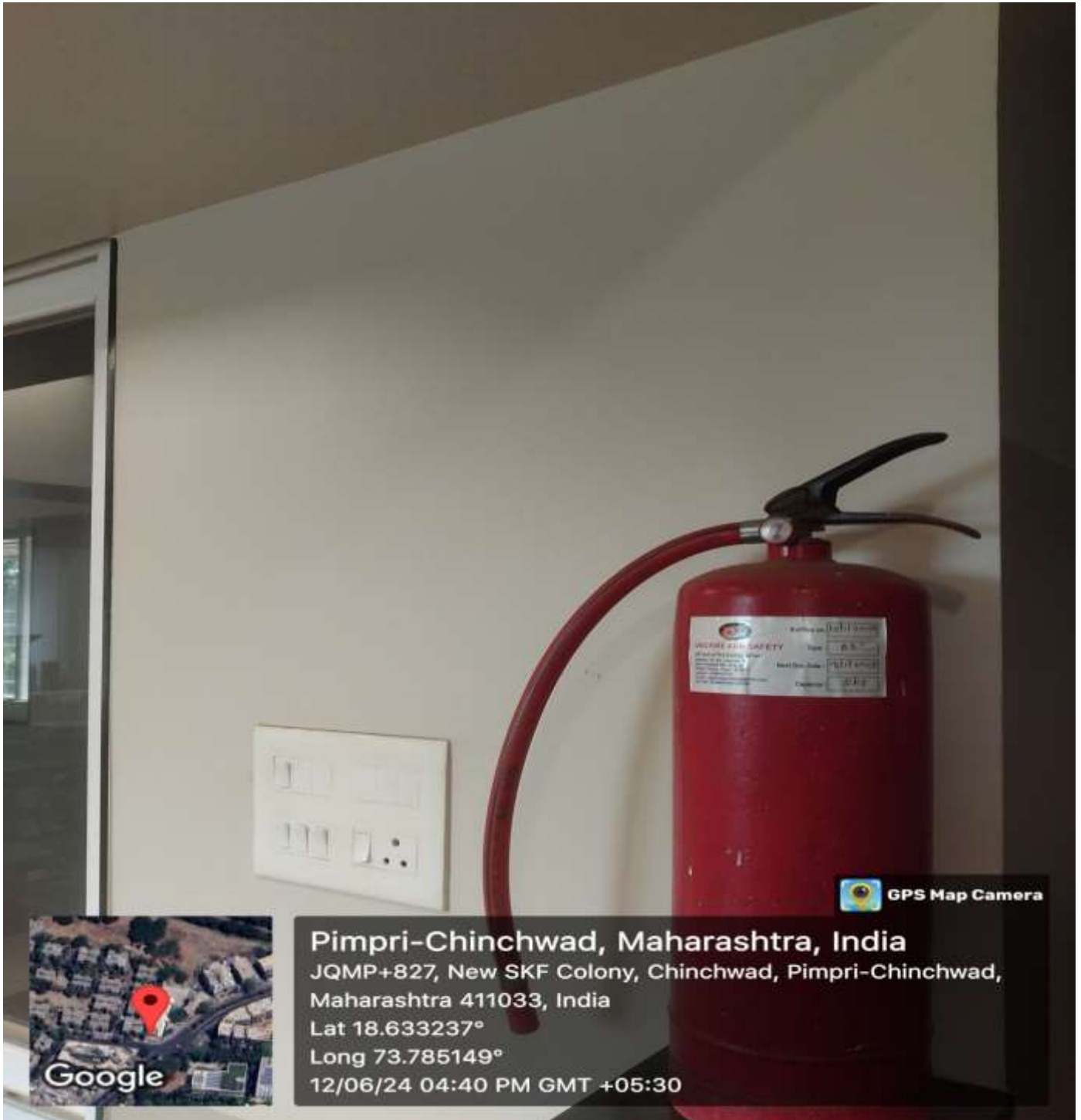
**INTERNATIONAL INSTITUTE OF MANAGEMENT SCIENCE**

**An ISO 9001 Certified Institute**

(Approved by AICTE Ministry of HRD Govt. of India, Recognised by Govt. of Maharashtra and Affiliated to Savitribai Phule Pune University)

Campus. : IIMS Bldg, S. No. 169/1/A, Opp. Elpro International, Chinchwad, Pune - 411033. Ph.: (020) 27353730/32/33/34, Fax : (020) 27354731  
Website. : [www.iims.ac.in](http://www.iims.ac.in) E-mail : [info@iims.ac.in](mailto:info@iims.ac.in)

## Fire Extinguisher:





Yashaswi Education Society's

Reg No. Maha. : 417/2007/Pune

**INTERNATIONAL INSTITUTE OF MANAGEMENT SCIENCE**

**An ISO 9001 Certified Institute**

(Approved by AICTE Ministry of HRD Govt. of India, Recognised by Govt. of Maharashtra and Affiliated to Savitribai Phule Pune University)

Campus. : IIMS Bldg, S. No. 169/1/A, Opp. Elpro International, Chinchwad, Pune - 411033. Ph.: (020) 27353730/32/33/34, Fax : (020) 27354731  
Website. : [www.iims.ac.in](http://www.iims.ac.in) E-mail : [info@iims.ac.in](mailto:info@iims.ac.in)





Yashaswi Education Society's

Reg No. Maha. : 417/2007/Pune

**INTERNATIONAL INSTITUTE OF MANAGEMENT SCIENCE**

**An ISO 9001 Certified Institute**

(Approved by AICTE Ministry of HRD Govt. of India, Recognised by Govt. of Maharashtra and Affiliated to Savitribai Phule Pune University)

Campus. : IIMS Bldg, S. No. 169/1/A, Opp. Elpro International, Chinchwad, Pune - 411033. Ph.: (020) 27353730/32/33/34, Fax : (020) 27354731  
Website. : [www.iims.ac.in](http://www.iims.ac.in) E-mail : [info@iims.ac.in](mailto:info@iims.ac.in)

## Generator:





Yashaswi Education Society's

Reg No. Maha. : 417/2007/Pune

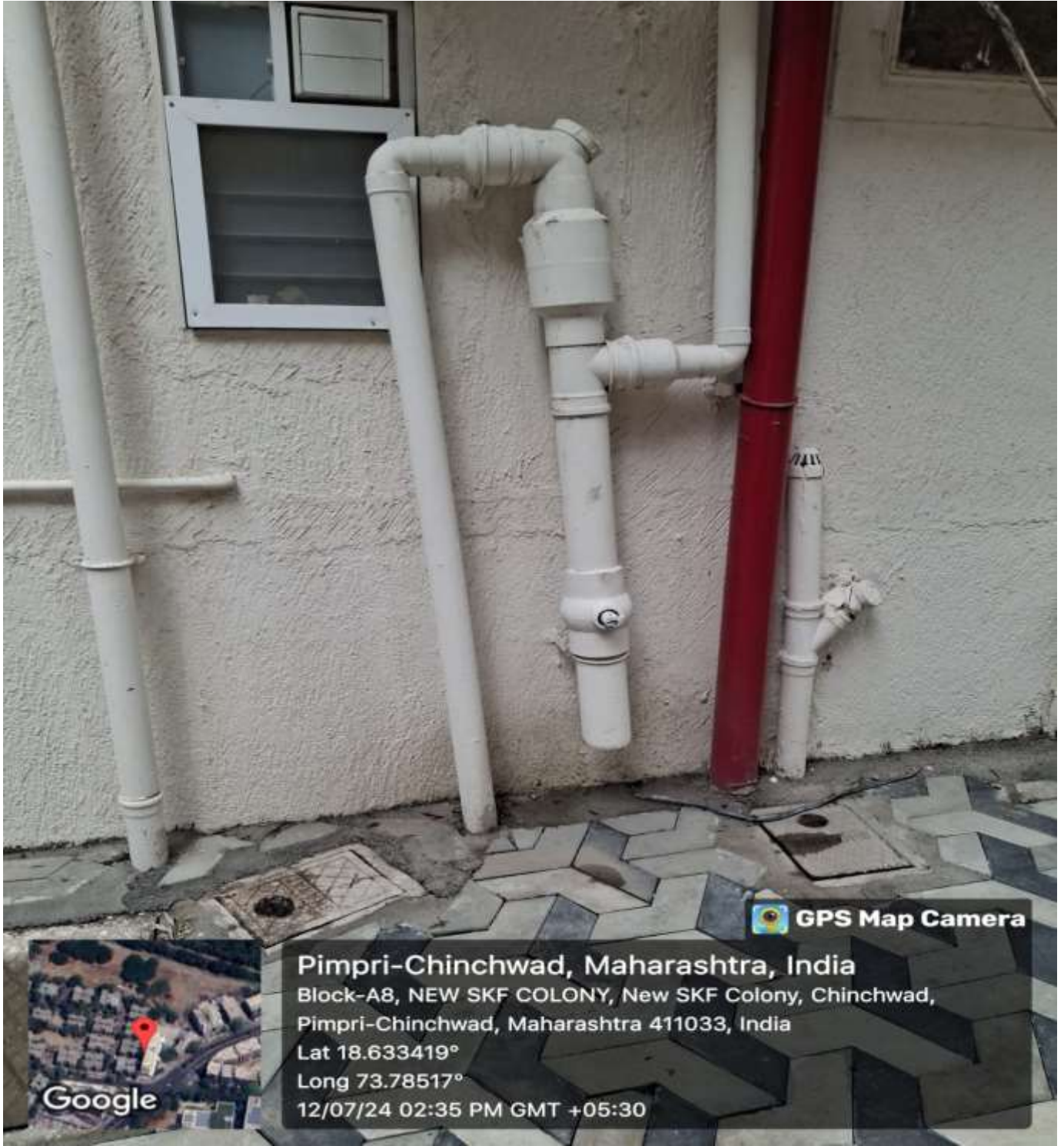
**INTERNATIONAL INSTITUTE OF MANAGEMENT SCIENCE**

**An ISO 9001 Certified Institute**

(Approved by AICTE Ministry of HRD Govt. of India, Recognised by Govt. of Maharashtra and Affiliated to Savitribai Phule Pune University)

Campus. : IIMS Bldg, S. No. 169/1/A, Opp. Elpro International, Chinchwad, Pune - 411033. Ph.: (020) 27353730/32/33/34, Fax : (020) 27354731  
Website. : [www.iims.ac.in](http://www.iims.ac.in) E-mail : [info@iims.ac.in](mailto:info@iims.ac.in)

## Rain Water Harvesting:





Yashaswi Education Society's

Reg No. Maha. : 417/2007/Pune

**INTERNATIONAL INSTITUTE OF MANAGEMENT SCIENCE**

**An ISO 9001 Certified Institute**

(Approved by AICTE Ministry of HRD Govt. of India, Recognised by Govt. of Maharashtra and Affiliated to Savitribai Phule Pune University)

Campus. : IIMS Bldg, S. No. 169/1/A, Opp. Elpro International, Chinchwad, Pune - 411033. Ph.: (020) 27353730/32/33/34, Fax : (020) 27354731  
Website. : [www.iims.ac.in](http://www.iims.ac.in) E-mail : [info@iims.ac.in](mailto:info@iims.ac.in)

## Smoke Detectors:

